

**PSEG LONG ISLAND LLC  
on Behalf of and as Agent for the  
LONG ISLAND LIGHTING COMPANY d/b/a LIPA**

**Southampton to Deerfield Transmission Project**

**ENVIRONMENTAL MANAGEMENT AND CONSTRUCTION PLAN**

**Appendix T**

**Public Involvement Plan**

## ***Introduction***

PSEG Long Island LLC, on behalf of and as agent for the Long Island Lighting Company d/b/a LIPA, a wholly-owned subsidiary of the Long Island Power Authority (the “Certificate Holder”), is proposing the design and construction of a new, 138 kV underground transmission line of approximately 4.5 miles (see Appendix T-1 for a map of the Project location), to be operated initially at 69 kV, between the Southampton Substation and the Deerfield Substation, in the Village and Town of Southampton, Suffolk County. The project is called the Southampton to Deerfield Transmission Project (hereafter referred to as “Project” or “SHDF Project”).

The Project is driven by a requirement to address North American Electric Reliability Corporation (“NERC”) transmission planning (“TPL”) reliability standards. The Project is needed because the loss of either power generation or a transmission line serving Long Island’s South Fork could lead to power outages. The addition of a second transmission line from Southampton Substation to Deerfield Substation would reinforce LIPA’s electric transmission system on the South Fork and improve reliability of service to LIPA’s customers. PSEG Long Island’s Project mission statement and description of Project benefits is provided below.

### **Mission Statement:**

*PSEG Long Island is proposing a new underground electric transmission line to increase the load capacity and reliability of the electric transmission system on the South Fork. Called the Southampton to Deerfield Transmission Project or SHDF Project, the principal project component is the construction of a new 4.5 mile underground 138 kV transmission line between the Southampton Substation (located in the Village of Southampton at the intersection of North Sea Road and West Prospect Street) and the Deerfield Substation (located in the Hamlet of Watermill, on Water Mill Towd Road) to be operated initially at 69 kV. The project route is located wholly in the Town of Southampton and will travel through the Village of Southampton. The project will be constructed primarily within municipal public roadways and rights-of-way along North Sea Road, Willow Street, North Main Street, North Sea Mecox Road, David Whites Lane, Edge of Woods Road, and Water Mill Towd Road.*

*The SHDF Project is the most cost-effective solution to meet the South Fork's growing demand for electricity and provide greater system reliability. The line must be installed to meet current and future capacity needs on the South Fork, to continue the provision of safe, robust, and reliable service in the area, and to remain in compliance with applicable regulations. The Project also is consistent with and furthers the goals of New York State’s energy goals.*

### **Project Benefits:**

- The new 138kV underground transmission line provides redundancy in the event of an electric system impact. This improves the reliability of the electric grid for residents and businesses on the East End of Long Island.
- The new transmission cable will ensure continued reliable service to the South Fork. With a continual average growth rate of 2 to 2.4 percent per year, there is a need for another supply circuit from the Southampton Substation to the Deerfield Substation.

- While much of New York’s transmission infrastructure is aging, the new facilities will serve the public for years to come.
- The underground transmission line provides storm and weather hardening and resiliency (i.e. underground versus the more weather-susceptible overhead lines).
- The new transmission cable will be located entirely underground except for certain above-ground electrical equipment within the existing substations. The Project will be located primarily under roads and other public rights-of-way. Construction will be performed in a manner that will result in the least amount of impact to residents, businesses, and travelers in the area to the maximum extent practicable. Throughout construction, access to businesses and residences along the Project route will be maintained. Public participation in the Article VII process is welcome and key to the success of PSEG Long Island and this Project.

### ***Purpose of Plan***

A comprehensive public outreach plan providing for proactive, open lines of communication with affected interested parties is essential to the success of the Project. The purpose of this plan is to effectively communicate with interested parties and keep them informed of project status and activities.

### ***Project Siting Process***

The application process under Article VII of the State Public Service Law before the New York State Public Service Commission (“PSC”) sets forth a review process for the consideration of any application to construct and operate a major utility transmission facility such as is proposed by this Project. The application and approval process are frequently referred to as “Article VII”. The PSC “strongly encourages Certificate Holders to voluntarily communicate with the public early in the project’s planning phase as well as during all subsequent phases of the [siting] process.” (New York Public Service Commission, The Certification Review Process for Major Electric and Fuel Gas Transmission Facilities, November 2017, at 6).

The PSC also encourages Certificate Holders to include a complete report of public involvement activities and a comprehensive interested party management plan (Ibid. at 10).

The term “interested parties” includes “state and local officials, agency representatives, municipalities, special interest and environmental groups, residents of communities or areas directly surrounding the facility and residents in other communities or areas that are adjacent to the facility who may see themselves as affected by the project.” PSEG Long Island also considers interested parties to include business owners/operators within the Project area or otherwise potentially affected by the construction of the Project.

### ***Criteria for Successful Public Outreach***

The following overarching public involvement philosophy has been developed for the Project:

- **Proactive:** Anticipate interested parties’ questions and concerns and provide appropriate,

timely information.

- **Timely:** Communicate quickly and accurately in a responsive manner in accordance with “PSEG Long Island’s Interested Party Inquiry Protocol” (see Appendix T-2). Inquiries are to be quickly acknowledged by the next business day. Any complaints that are received by the Project team via the Project hotline, email, or other means will be responded to within one business day and will be addressed following the procedures outlined in the “Complaint Management and Resolution Plan” (Appendix D of the EM&CP or see Appendix T-3).
- **Consistent:** Provide consistent responses to inquiries across various audience and Project segments. An “Interested Party Inquiry Protocol” is available to ensure communications are handled in a consistent manner, in accordance with PSEG Long Island’s corporate communication standards.
- **Interactive:** Provide mechanisms for feedback from interested parties. A direct hotline number with voicemail and texting features has been established, a website, and e-mail function are set up for this purpose. The website will have two URLs which will remain active throughout the Project, [www.southampton2deerfield.com](http://www.southampton2deerfield.com) and the shorter URL [www.sh2df.com](http://www.sh2df.com). The shorter URL will be used on signage and public message boards during construction to make it easier for motorists to read.
- **Clear & Concise:** Provide simple, user-friendly communications tailored to each interested party. Avoid the use of jargon or acronyms that may be difficult for interested parties to understand.

Throughout the public involvement process, coordination will occur between the Burns & McDonnell Public Involvement Team, the Project Management Team, and PSEG Long Island’s External Affairs and Communications Teams to further develop the processes, expectations, and desired Project outcomes. Most importantly, the Public Outreach Plan should be implemented with the intent of maintaining and further supporting PSEG Long Island’s relationship and reputation with its customers.

### ***Public Outreach Plan (“Plan”)***

Outreach began prior to the filing of the Article VII application with the PSC and will continue throughout the Article VII permitting process as well as through construction and restoration. The tools of the Public Outreach Plan will help to enable open, transparent, and timely two-way communication between the Project team and the various interested parties. The Plan outlined herein adheres to the Article VII process as outlined by the PSC.

### ***Pre-Application Phase***

During the Pre-Application Phase of the Public Outreach Plan, the focus was on the development of the tools necessary to facilitate communications with the various interested parties, identified in the “PSEG Long Island SHDF Project Interested Parties List” (see Appendix T-4), as well as begin the proactive communications necessary to aid the routing studies and engineering necessary for the Article VII Application filing.

Routing studies have been undertaken to examine the various route segments between the Southampton and Deerfield substations to find the most efficient route, balancing constructability, and minimization of environmental and societal impacts.

To facilitate these activities, communications occurred with Federal, State, County, Town, and Village municipal officials and agencies to obtain the needed information to complete the various studies necessary to file the Article VII application. A letter was mailed to elected officials representing the Project area (see Appendix T-5), announcing the Project, providing brief information about the Project need, and soliciting a meeting to further discuss the Project. Meetings were scheduled with Suffolk County, the Town of Southampton, and Village of Southampton. During discussions with the Town of Southampton, PSEG Long Island briefly considered diverting the proposed Project route from David Whites Lane to Long Springs Road to reduce the construction impact to North Sea Mecox Road. However, after the Project Team met with the Southampton Town Historian to discuss the routing options, the use of Long Springs Road was abandoned because of historic geological features on Long Springs Road. As a result of that meeting, the project was provided with a list of Historic Structures along the preferred route. During the meeting with the Village of Southampton, concerns were raised about construction on West Prospect Street, adjacent to the Southampton Substation, because the roadway had been recently restored. As a result of those concerns, the Project route was altered to avoid construction on West Prospect Street and stay within the substation property right-of-way before exiting onto North Sea Road.

As information was obtained from meetings with stakeholders, a Project routing study, and engineering study refined the network of conceptual routes to a proposed, and an Eastern and Western alternative. At this time, focused outreach occurred with identified key interested parties to discuss the results of these initial studies, while soliciting feedback to address concerns. The intent was to promote greater understanding of the proposed route prior to the filing of the Article VII application. The Project Team also utilized Federal Census data to identify disadvantaged communities and areas of limited English proficiency within the Project study area. From this data it was determined that 10% or less of the population within the Project study area spoke Spanish as their primary language. To provide information to the public, the Project Fact Sheet (see Appendix T-6) was translated into Spanish, and the Project website has been made available to be translated into any language through Google Translate.

During the Pre-Application Filing Phase, the Project established a hotline (631-237-7196) and a Project specific email address ([info@southampton2deerfield.com](mailto:info@southampton2deerfield.com)). The hotline and email address are available on the Project website, the Project Fact Sheet, and included on all mailings as well as future notifications and mailings to abutters of the Project.

The Project conducted two community kiosks at different times and locations in November 2023 to inform the public of the project and provide information about the Public Information Session scheduled for December 6, 2023. The Public Information Session was advertised in two local publications (see Appendix T-7 for Advertisement), the Project website, and two mailings were sent to abutters of the proposed and alternative routes (see Appendix T-8 and Appendix T-9). Additionally, outreach was made to the North Sea Citizens Advisory Committee (CAC), the Water

Mill Citizens Advisory Committee (CAC), and local emergency service providers to inform the organizations of the Project and upcoming Public Information Session. The Project held an afternoon and evening session of the Public Information Session at the Rogers Memorial Library in Southampton Village. At the Public Information Session, the Project Team displayed maps, had Project Fact Sheets available, Project specific information, subject matter experts, and a translator was available to the public if any attendees needed information to be relayed in Spanish. Comment cards (see Appendix T-10) were available to solicit feedback from the community, which were then reviewed by the Project Team.

The Project was invited to present at the December 12, 2023, North Sea CAC meeting. The presentation included information about Project benefits, the routing study, a map of the proposed and alternative routes, and high-level project schedule. During the meeting, the community voiced concerns about the Western Alternative Route and a preference for the Proposed Route option. The community also requested that in-road construction activities be limited to between Labor Day and Memorial Day to avoid summer traffic congestion.

Prior to filing the Article VII application, on January 29, 2024, the Project Team sent a notification letter (see Appendix T-11) to abutting landowners of the proposed and alternative routes alerting them that the Project intended to file an Article VII application. The Project Team utilized Suffolk County Tax Map records obtained from the Suffolk County Clerk's Office to identify landowners whose property abuts the proposed and alternative routes. External Affairs worked with the Permitting Team to complete the required Article VII application notifications, and outreach processes at the time of filing, and afterwards. The efforts include the development of a Statutory Service List (see Appendix T-12) and a Statutory Landowner List (see Appendix T-13). A notification mailing was sent to the Statutory Landowner list (see Appendix T-14) to disclose the Article VII filing, a posting of the notification was displayed to the public at community locations, a copy of the application was mailed to the Statutory Service List, and publication of the notice was printed in two local area newspapers (see Appendix T-15).

#### *Post-Application Filing Phase*

During the Post-Application Filing Phase, public outreach efforts include the hosting of virtual and/or in person open houses and meet and greets in the affected communities along the proposed and alternative Project routes, the maintenance of Project communications tools, the management of comments and data filed by the parties to the Article VII Proceeding, and the maintenance of interested party relationships. The Project was invited to present at the March 5, 2024 Sustainable Southampton Green Advisory Committee. The presentation included general project information as well as information about the Article VII Proceeding.

Prior to the Public Statement Hearing on October 9, 2024, a letter (see Appendix T-16) was mailed via first class mail to all abutting landowners of the proposed and alternative routes notifying landowners of the Public Statement Hearing. The letter included a copy of the Project fact sheet, and a notice about the settlement process. This letter was also circulated via email to the North Sea CAC, Water Mill CAC, and the Sustainable Southampton Green Advisory Committee.

During the Post-Application Filing Phase, the Project Team will meet with intervenors who have petitioned to participate in the docket. The intent would be to attempt to address concerns raised by such parties. The meetings would occur following consultation with the Project Team, Legal Counsel, and Project Outreach.

Engagement with such parties throughout the process (without violating Settlement rules) will help to identify issues and potential resolutions to address those issues. The Project has maintained a list of all completed outreach activities (see Appendix T-17) including briefings with stakeholders and other outreach mechanisms.

As part of the Certificate of Environmental Compatibility and Public Need (the “Certificate”), the Project will comply with all requirements outlined in the conditions of the Certificate.

The Project will make a copy of the Environmental Management and Construction Plan (“EM&CP”) and a notice of the filing of the EM&CP (see Appendix T-18) available at the public repositories including at the Rogers Memorial Library (91 Coopers Farm Road, Southampton, NY 11968), Southampton Town Hall (116 Hampton Road, Southampton NY 11968), and Southampton Village Hall (23 Main Street, Southampton, NY 11968). A copy of the EM&CP will also be available on the Project’s website. The EM&CP Filing Notice will be publicized and mailed according to the Certificate Conditions. A letter with information about the Project (see Appendix T-19) and a Project fact sheet will be included with the Filing Notice to abutting property owners of the Proposed Route

The Project developed a “Complaint Management and Resolution Plan” (CMRP), a copy of this plan will be added to the Project website or can be found in the Project EM&CP. This plan outlines the types of complaints, tracking complaints, responding to and resolving complaints as well as reporting protocols. Additionally, a flow chart was developed and included in the CMRP which outlines the complaint and claims process.

In preparation of the EM&CP, the Project continued coordination with local municipalities including Project briefings to Suffolk County, and the Town and Village of Southampton. During those meetings preliminary discussions occurred regarding construction, vegetation management, and restoration expectations. After the discussion with the Town of Southampton, the Project received additional information from the Chief Environmental Analyst and Director of Community Preservation on the Town’s preferred vegetation management and tree replacements. The Project continued coordination with each municipality after the meeting and provided a municipal specific table outlining key discussion topics regarding vegetation management and preferred plantings along municipal rights-of-way, construction hour expectations and preference for daytime vs nighttime work hours, and restoration expectations of municipal roadways. An additional meeting with the Town of Southampton was scheduled to coordinate and reaffirm restoration expectations.

The Project will coordinate with Southampton Union Free School District and Our Lady of the Hamptons to identify a point of contact from each school to receive project notification, emails, and updates on project construction.

Prior to construction commencing, the Project Team shall coordinate with the Southampton Fire Department, Town and Village of Southampton Police Departments, and Town and Village of Southampton Volunteer Ambulance Departments. The Project will contact the local emergency service providers and obtain a point of contact for each agency to receive weekly project email updates throughout construction and restoration of the project. The Project conducted a survey of all local businesses along the Project route, provided a copy of the Project fact sheet, and requested a point of contact to provide the business with information prior to construction activities (see Appendix T-20 for the business notification). The points of contact will be provided with updates prior to commencement of construction activities.

On August 27, 2025, the Project mailed letters (see Appendix T-21) via first class mail to identified farm operators, agriculture districts, and purchased development rights parcels (see Appendix T-22 for a list of parcels) along the Project route requesting a site visit to identify drainage tiles within 10 feet of the roadway. The Project also consulted Suffolk County Soil and Water Conservation District Manager on drainage systems along the Project route and shared a copy of the draft Drainage System Repair Plan for review. Additionally, per certificate condition 94(I) all farm operators/owners will be provided with a phone number to directly communicate with the Certificate Holder through all stages of the Project, as well as a phone number for the Project Manager or associated representative to communicate with during the operation and maintenance of the transmission line.

The Project will schedule a Public Information Session in December of 2025 prior to the Construction and Restoration Phase to inform the public of the project and provide construction information. At the Public Information Session, the Project will display maps, subject matter experts and a translator will be in attendance to answer questions, and comment cards will be available to solicit feedback from the community. The Public Information Session will be publicized in the local newspaper, on the Project website, and mailings will be sent to abutters of the certified route.

### *Construction & Restoration Phase*

No less than two weeks prior to construction commencing, the Project will follow the conditions in the Certificate to disseminate a Notice of Intent of Commence work or “Construction NOI”. Recipients of this notification will include but are not limited to the local emergency services, Suffolk County Water Authority, Long Island Rail Road and departments of public works.

During the construction and restoration phase, public outreach efforts will include door-to-door notifications, emailed construction updates, website updates, response to hotline and email inquiries, and continued communications with municipalities and identified stakeholders. The Project website will provide information on scheduled nighttime work, construction updates, information on detours, a 2-week look ahead for the Project construction schedule, and Project wide notifications.



See the chart below for a general construction outreach schedule.

<b>External Affairs Activities</b>	<b>General Schedule or Project Milestone</b>	<b>Additional information</b>
Public Information Session	Prior to the start of construction, after approval of EM&CP.	Anticipated in December 2025.
Notice of Intent of Commence work or "Construction NOI" to interested parties	No less than 2 weeks prior to site preparation for construction.	Notify the public of the date project construction will commence. Including all local officials, school districts, Long Island Rail Road, local water companies, Department of Public Works, transportation services, and emergency services such as fire departments and police departments along the entire route.
Provide Notice of Intent of Commence work or "Construction NOI" to local media	No less than 2 weeks prior to site preparation for construction.	Including local newspapers of general circulation and a free publication (if available)
Posting of Notice of Intent of Commence work or "Construction NOI" at Public Repositories	No less than 2 weeks prior to site preparation for construction commencement	Display in the repositories identified in the Application, the Project website, and other public places (such as post offices, libraries, town halls, community centers or other community bulletin boards)
Abutter Notification Letter Mailing: Notice of Intent of Commence work or "Construction NOI"	At least 14 days prior to the start of construction	To property owners who properties are crossed by or abut the ROW. Mailed by First class mail
Door-to-Door Notifications to abutters	Throughout construction activities. Prior to local construction.	Will include expected schedule, duration, type of activities, traffic controls if applicable and project contact information.
Outreach with School Transportation Lead	Prior to start of construction and when applicable during construction.	
Outreach to Emergency Services	Prior to start of construction and when applicable during construction.	
Website updates: overall project schedule	No less than two weeks prior to construction and throughout the project.	

Email and Website updates: two-week look ahead and construction work maps	Regularly throughout construction.	
Monthly reports on construction activities to NYSDPS	Monthly throughout construction	Monthly reporting includes all facets of work to NYSDPS
Weekly reports to Staff and NYSDEC	Weekly throughout construction	Weekly reports summarizing construction activities and indicating upcoming construction locations for the following week.
Notification to local emergency services	At least 48 hours prior to construction activities within their jurisdiction	Local Fire Departments and emergency services will be notified prior to commencement of construction activities.
Chemical Waste at construction site	At least 48 hours prior	Local Fire Departments and emergency service providers will be notified of chemical waste materials arriving at the construction site (contractor responsibility).
Road Closure Notifications	At least 24 hours prior	Residents in close proximity to road closures will be given advanced notification of construction activities and road closures.
Coordination with local municipalities and Highway Departments	Periodically throughout construction.	Notify the County, Town, and Village of approximate date work will begin within their jurisdiction and updates about construction activities.

A timeline for notifications for any road closures or detours will be outlined in the Maintenance and Protection of Traffic (“MPT”) plan. A copy of this plan will be available on the Project website. The Project will follow notification requirements outlined in the MPT for directly impacted abutters, municipalities, and emergency services. Notifications as required by the MPT plan include but are not limited to door-to-door notifications, emails to Project email list, and posting information on the Project website about planned road closures or detours.

Local emergency services will be notified in accordance with the Spill Prevention, Control and Countermeasures outlined in Section 3.6 of the Environmental Management and Construction Plan. The Project will notify local emergency services of chemical and material waste materials on the construction site at least 48 hours prior to the arrival of materials on site.

The Project will continue coordination with local municipalities throughout construction and restoration. Prior to construction commencing, key points of contact will be added to the Project email list to receive notifications and schedule updates.

### *Public Outreach Tools*

To promote proactive communications with the public, a number of tools will be used throughout the various phases of the Project. The messaging developed will be overarching and will communicate the need for the Project and the benefits it will provide for the region.

- **Identification of a Project Name:** The naming of any project can have a direct impact on its public perception. The name should be easy for interested parties to remember, and impactful. PSEG Long Island Communications to be consulted on the Project name.

*Responsibility: PSEG Long Island*

*Timing: Prior to publicly unveiling Project.*

- **Overarching Messaging:** The overarching messaging should focus on the need and the benefits of the Project.
  - NERC contingency issue, therefore, the Project must be built for reliability and redundancy;
  - Storm hardening (undergrounding of facilities allows for greater storm resiliency);
  - Reliable electric delivery;
  - Increased load demand; and
  - Reduced environmental and societal impacts through use of public roadways and undergrounding

*Responsibility: PSEG Long Island*

*Timing: Prior to publicly unveiling Project.*

- **Collateral:** Various collateral will be developed for the Project, using the overarching messaging and branding of PSEG Long Island, and the Project.
  - Field cards (see Appendix T-23) for use during surveys and visible construction activities;
  - Mapping of the various routes;
    - Map books will be created for the pre-application Public Information Session.
  - PowerPoint presentations for interested party sessions;
    - Presentations will be scheduled with elected officials and community organizations.
  - Project Fact Sheet was developed and includes a project description and will be available in both English and Spanish;
  - Project mailings; and
  - Construction notifications with expected timing and durations, see Appendix T-24 and Appendix T-25 for examples of construction notifications.

*Responsibility: Burns & McDonnell*

*Timing: During both the Pre-Application, Post-Application Filing and Construction Phase.*

- **Face-to-Face Briefings:** Briefings will be held with the various agencies and interested parties throughout the Project in order to identify immediate issues which may require resolution during the Article VII proceedings. Federal, State, County, and municipal officials will receive a briefing customized to the Project's impact upon their jurisdiction.
  - Briefing with Village of Southampton
  - Briefing with Town of Southampton
  - Briefing with Suffolk County

*Responsibility: PSEG Long Island/ Burns & McDonnell*

*Timing: During Pre-Application Phase and Post-Application Filing Phase.*

- **Website and Social Media:** A Project-specific website will be developed to reinforce the overarching messaging for the Project while providing up-to-date information to the interested parties about permitting and other efforts. The website will contain a document repository of publicly available documents and collateral for the Project. Project notifications and news will be updated on the website throughout the Project lifecycle.

*Responsibility: Olive Development and Burns & McDonnell*

*Timing: Prior to publicly unveiling Project with updates as project progresses through Construction and Restoration.*

*www.Southampton2deerfield.com and/or [www.SH2DF.com](http://www.SH2DF.com)*

- **Email:** A project specific email address will be created based on the project website. This email address will establish for interested parties to make direct inquiries to the Project Team. This email address can also be utilized to send project updates and construction notifications

*Responsibility: Burns & McDonnell*

*Timing: Prior to publicly unveiling Project.*

*info@southampton2deerfield.com*

**Hotline:** A traditional hotline will be established for interested parties to make direct inquiries to the Project Team. The incoming messages will be recorded, and a response returned within 24 hours or the next business day. The hotline also allows interested parties to text inquiries instead of leaving a voicemail.

*Responsibility: Burns & McDonnell*

*Timing: Prior to publicly unveiling Project.*

*Hotline Number: 631-237-7196, see Appendix T-26 for “PSEG Long Island Project Hotline Script”.*

- **Open Houses:** Traditionally used as a part of the Article VII process, efforts will include hosting virtual and/or in person open houses and meet and greets in the vicinity of the proposed and alternative Project routes. Subject Matter Experts from the Project Team and PSEG Long Island will provide information such as the Article VII process, real estate needs, environmental compliance, engineering, EMF, health and safety, and outreach.

*Responsibility: Burns & McDonnell*

*Timing: During both the Pre-Application and Post-Application Filing Phase.*

- **Community Kiosks:** To increase transparency and education about the Project, the Outreach team will work with local businesses and community centers to provide temporary kiosks in select locations in the community. These kiosks will include printed collateral such as FAQs, route descriptions and contact information. The free information will give the community an opportunity to take and review this information at their convenience. There will also be the option for members of the Outreach team to appear at the kiosks for “office hours” to meet interested parties and answer questions.

*Responsibility: Burns & McDonnell*

*Timing: During both the Pre-Application and Post-Application Filing Phase.*

- **Key Interested Party Outreach:** Meetings with key interested parties along the certified Project route to explain the Project and solicit feedback. These meetings will help refine the routing analysis and will also educate key interested parties about the Project to build support and understand neighborhood concerns.
  - Schools - discuss bus routes and stop locations
  - Emergency Services - communication plan for roadway construction locations and emergency response plans.

*Responsibility: PSEG Long Island/ Burns & McDonnell*

*Timing: During both the Pre-Application Phase and Post-Application Filing Phase.*

- **Identify Project Supporters:** Through the outreach process, the Project Team will attempt to identify interested parties that support the Project so that such support is reflected in the Article VII administrative record.

*Responsibility: PSEG Long Island/ Burns & McDonnell*

*Timing: During both the Pre-Application and Post-Application Filing Phase.*

- **Pre-Application Notice:** Both before and at the time of filing the Article VII application PSEG Long Island will notify abutting landowners to promote Project transparency. The Outreach Team will also work with Legal to facilitate official notification and application distribution required as part of the Article VII application filing.

*Responsibility: Burns & McDonnell*

*Timing: Two weeks prior to filing application*

- **Interested Party and Neighborhood Briefings:** Throughout the Article VII application process, requests may be made by local interested parties (such as business groups and neighborhood organizations) for briefings on the Project. Outreach presentations to these groups will give PSEG Long Island the opportunity to discuss the Project in an open forum in parallel with the Article VII proceeding. It is recommended that the Project Team accept requests from these types of groups and actively engage with the Project's neighbors.

*Responsibility: PSEG Long Island/ Burns & McDonnell*

*Timing: During both the Pre-Application and Post-Application Filing Phase.*

- **Construction Notifications:** At the start of and throughout constructions, the project will provide construction notifications to abutters and interested parties. These notices will be provided through door-to-door notifications, website updates, or emails. These notifications will be provided to impacted abutters with information about the upcoming construction scope in their neighborhood and include instructions to contact the project hotline or email with any questions or concerns.

*Responsibility: PSEG Long Island/ Burns & McDonnell*

*Timing: Construction and Restoration phases.*

## **Data Management**

Key to the Outreach Plan is efficient data management. External Affairs and Burns & McDonnell will work directly with the Project Controls Team to categorize and manage all communications with the interested parties throughout the Project, making sure that documentation is clear, consistent, and concise. Reports will be developed regarding public contact and response, which will be shared with Project Management and PSEG Long Island and may be shared with regulators.

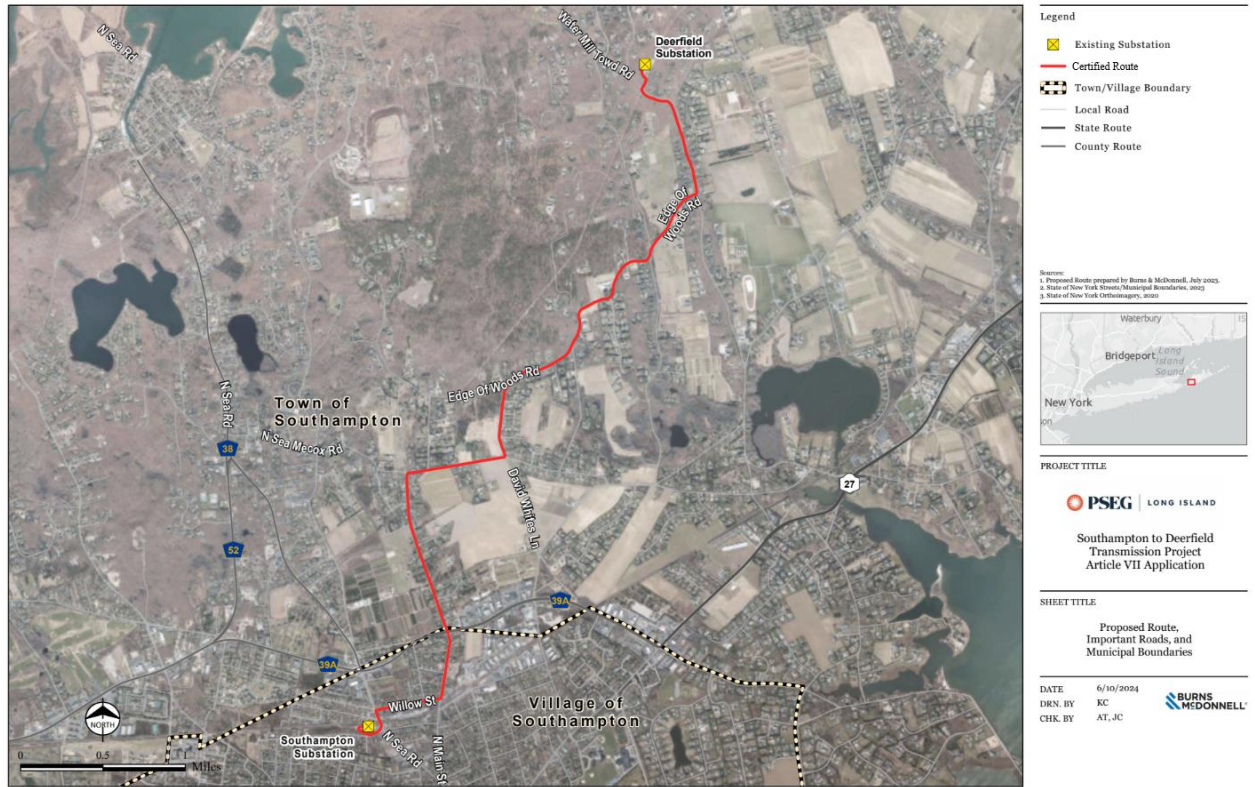
The Project database will be used to house the various contacts, and each interested party inquiry will be given a unique identifier for future reference.

### *Appendices*

- Appendix T-1– PSEG Long Island SHDF Map of Project Location
- Appendix T-2 – PSEG Long Island Interested Party Inquiry Protocol
- Appendix T-3 - PSEG Long Island SHDF Complaint Management and Resolution Plan
- Appendix T-4 - PSEG Long Island SHDF Interested Parties List
- Appendix T-5 - PSEG Long Island SHDF Letter to Municipalities Announcing SHDF Project
- Appendix T-6 – PSEG Long Island SHDF Fact Sheet (English and Spanish)
- Appendix T-7 – PSEG Long Island SHDF Public Information Session Advertisement
- Appendix T-8 – PSEG Long Island SHDF Letter to Abutting Landowners and Alternative Routes Abutting Landowners - Public Information Session
- Appendix T-9 – PSEG Long Island SHDF Postcard to Abutting Landowners and Alternative Routes Abutting Landowners – Public Information Session
- Appendix T-10 – PSEG Long Island SHDF Public Information Session Comment Card
- Appendix T-11 – PSEG Long Island SHDF Letter pre-filing Article VII Application Abutting Landowners and Alternative Routes Abutting Landowners
- Appendix T-12 – Statutory Service List
- Appendix T-13 – Statutory Landowner List
- Appendix T-14 – PSEG Long Island SHDF Article VII Application Filing Letter to Statutory Landowner List
- Appendix T-15 – PSEG Long Island SHDF Public Notice of Article VII Application Filing
- Appendix T-16 - PSEG Long Island SHDF Public Statement Hearing Letter to Abutting Landowners and Alternative Routes Abutting Landowners
- Appendix T-17 - PSEG Long Island SHDF Project Outreach Completed
- Appendix T-18 – Notice of Filing an Environmental Management and Construction Plan for the Southampton to Deerfield Transmission Project
- Appendix T-19 - Letter to Abutting Property Owners included with the EM&CP Filing Notice
- Appendix T-20 - PSEG Long Island SHDF Door-to-door Business Survey
- Appendix T-21 – Letter to Abutting Farm Operators Requesting Identification of Drainage Tiles
- Appendix T-22 – List of Identified Farm, Agriculture Districts, or Purchased Development Rights Parcels
- Appendix T-23 - PSEG Long Island SHDF Field Cards
- Appendix T-24 – PSEG Long Island SHDF Door-to-door notification of Soil Boring Activities
- Appendix T-25 – PSEG Long Island SHDF Letter to Abutting Landowners Notification of Test Pitting Activities
- Appendix T-26 - PSEG Long Island SHDF Project Hotline Script

## Appendix T-1

### PSEG Long Island SHDF Map of Project Location





## Appendix T-2

### PSEG Long Island Interested Party Inquiry Protocol

#### ***Overview:***

On February 16, 2024, the Southampton to Deerfield Transmission Project filed the Article VII Application with the New York State Public Service Commission.

Letters were mailed to elected officials including New York State Senate, New York State Assembly, Suffolk County Executive, Suffolk County Legislature, Southampton Town Supervisor, Southampton Town Councilmembers, Southampton Village Mayor, and Southampton Village Trustees as well as abutting landowners, statutory landowners, and the statutory service list to notify of the Article VII filing.

On January 29, 2024, approximately 581 landowners on the Proposed and Alternative Routes received a letter notifying them of the filing. Each of these notices includes the Project hotline (631-237-7196), website ([www.southampton2deerfield.com](http://www.southampton2deerfield.com) or [www.sh2df.com](http://www.sh2df.com)) and email portal ([info@southampton2deerfield.com](mailto:info@southampton2deerfield.com)) for the public to communicate with the Project directly and proactively.

It should be assumed, therefore, that contacts to the Project hotline, email portal, PSEG Long Island Customer Service, and possibly management team members will occur from the public.

To correctly and accurately process questions, with timeliness, the following Protocol is proposed.

#### ***Process:***

1. Hotline Calls: For all hotline calls, the following will occur.
  - a. BMcD staff receive an email notifying of the call, with an audio recording of the call.
  - b. BMcD staff will return calls to the project hotline within 1 business day.
  - c. BMcD will refer to the Project database to confirm the resident or business is an abutter to the Project.
  - d. BMcD will produce a call report for the External Affairs and Project Management Team.
  - e. If necessary, BMcD will email the appropriate SMEs including Legal and Project Management, to answer any pending questions.
  - f. BMcD will advise the Core Team of call inquiry and any follow-up.
  - g. BMcD will add the call report to the SharePoint site.
2. Email Inquiries: For all email inquiries through the website portal, or to private email accounts, the following will occur.
  - a. BMcD will either receive the email directly, or the recipient will forward to BMcD.
  - b. BMcD will verify if the email sender is an abutter to the Project according to the Project database.
  - c. BMcD staff will return emails to the project within 1 business day. If additional time is needed to respond to specific questions, the team will send a general response acknowledging receipt.
  - d. BMcD will forward the email to the appropriate Project SMEs for an answer, including Legal and Project Management.
  - e. BMcD will craft a response and provide to External Affairs using input from SMEs, Legal and Project Management.
  - f. BMcD will respond, advise the Core Team of any further response.
  - g. BMcD will add the email chain to the SharePoint.
3. Text Messages: See Hotline process above.
4. For all external briefings, meeting summary will be produced and uploaded to the SharePoint website.

## Appendix T-3

### PSEG Long Island SHDF Complaint Management and Resolution Plan

This Complaint Management and Resolution Plan was prepared to satisfy Certificate of Environmental Compatibility and Public Need (Certificate) Condition 37, which states:

The Certificate Holder shall create a Complaint Management and Resolution Plan to be included as part of the EM&CP. The Complaint Management and Resolution Plan shall:

- a. Identify and include procedures for filing a complaint (e.g. by telephone, email, website, mail, or in-person) including protocols, if any, that may be unique based on the type of complaint (e.g. noise, dust) or Project phase (e.g. pre-construction, construction, post-construction); communication protocols the Certificate Holder will follow to inform the complainant of actions taken to address the complaint; and the steps the Certificate Holder will take if the complaint remains unresolved. The Plan shall also include a description of how the complaint process will be communicated to the public (i.e. via the Project website, community meetings, NOI to Commence Construction, etc.) as well as copies of any public materials informing potential complainants how or when to contact the Certificate Holder to file a complaint. A copy of a blank complaint form and log form will be included in the Complaint Plan.
- b. Require the Certificate Holder to report to DPS Staff every complaint that cannot be resolved after reasonable attempts to do so, and describe the actions taken to address the complaint, within ten (10) business days after receipt of the complaint. The Certificate Holder shall retain a record of complaints received, which records shall be made available during monthly audit meetings.
- c. Require the Certificate Holder to retain, for a period of five (5) years from receipt of complaint, electronic copies of: (i) the telephone logs for any calls made to the Project's toll-free number; and (ii) any submission to the Project email/website. Such records shall be made available to DPS Staff upon request. The requirement to retain such electronic copies shall terminate five (5) years from the date the notice required by Condition 44 has been provided to the Secretary.

#### COMPLAINT MANAGEMENT AND RESOLUTION PLAN

The full-time construction oversight and supervision personnel along with contact information are included in the EM&CP. Additionally, the following Project contact personnel will facilitate the submission and receipt of comments and complaints:

Southampton to Deerfield Project:  
631- 237-7196  
[info@southampton2deerfield.com](mailto:info@southampton2deerfield.com)  
[www.southampton2deerfield.com](http://www.southampton2deerfield.com)

Secretary  
New York State Public Service Commission  
Empire State Plaza, Agency Building 3  
Albany, NY 12223-1350  
Phone: 518-474-6530  
[secretary@dps.state.ny.us](mailto:secretary@dps.state.ny.us)

Public Information Officer  
New York State Public Service Commission  
Empire State Plaza, Agency Building 3 Albany, NY 12223-1350  
Phone: 518-474-7080  
[web.questions@dps.ny.gov](mailto:web.questions@dps.ny.gov)

DPS Staff General Complaints Office of Consumer Services  
New York State Department of Public Service  
Empire State Plaza, Agency Building 3 Albany, NY 12223-1350  
Phone: 800-342-3377 (8:30 a.m. to 4:00 p.m.)  
<http://www.dps.ny.gov>

DPS Staff Environmental Compliance  
Director of the Environmental Certification and Compliance Section  
of the Office of Electric, Gas, and Water  
New York State Department of Public Service  
Empire State Plaza, Agency Building 3 Albany, NY 12223-1350  
Phone: 518-486-7847

The Project has made available to the public a toll-free or local phone number, for the duration of construction and restoration of the Project, to receive inquiries or complaints, if any, from any member of the public about the construction of the Project. Acknowledgement of the receipt of the inquiry or complaint shall be responded to by a member of the Project team within one (1) business day. The phone number shall include a recorded outgoing message that will, when a call is not answered by a person, provide the caller with: (i) the number to be called at any time in case of emergency, (ii) the phone number and email address of the Secretary, and, (iii) the phone number of the Commission's Environmental Compliance Section.

The Project website provides a means for the public to communicate with the Project, to sign up for email updates or to register complaints or ask questions, through a direct link to a comment form. The Project email will also be available to receive complaints or inquiries during the duration of construction and restoration of the Project. The Project will post construction notices and other publicly relevant information about the Project, including fact sheets, news updates, schedules, night-time work, and traffic information to the Project website. The Project website shall allow users to subscribe to an electronic mailing list for Project updates and/or notifications.

Property owners abutting the Project route, community officials, and other identified community stakeholders will receive notification of the anticipated start of construction. This notification will include the Project website, information on how to sign-up for Project emails, the Project hotline phone number, and Project email address.

Complaints concerning the construction of the Project will be reviewed by the PSEG Long Island External Affairs Office, to understand the nature of the complaint. Thereupon, the Project team will investigate the problem and the course of action necessary to address the situation. The Project will report to DPS Staff, every complaint, and describe the actions taken to address the complaint, within ten (10) business days after receipt of the complaint. Where the complainant provides contact information, the Project will inform the complainant of actions taken to address the complaint. The Project will review a record of the complaints received at the monthly audit meetings. Upon completion of all actions with respect to the complaint, the Project will record the outcome of the investigation as well as the resolution.

Complaints may be categorized and addressed as follows:

Construction Disturbances

- Could include complaints about disturbances from construction activities such as noise, vibrations, or dust. Once the initial complaint is received, the Project's public outreach team will speak with the complainant to fully understand the nature of the complaint. The Project's public outreach team will then coordinate with the Project's construction management team to explore potential causes and potential mitigation measures at the field level. If the issue cannot be resolved in the field, then the public outreach team will continue to communicate with the complainant about the timeline, expectations of the disruptive activity, and a satisfactory resolution for all parties.

Access and Traffic

- Could include complaints received concerning traffic disruptions, driveway or delivery access. Once the initial complaint is received, the Project's public outreach team will speak with the complainant to fully understand the nature of the complaint. The Project's public outreach team will then coordinate with the Project's construction management team to find means to prevent or limit disruptions during construction. If the issue cannot be resolved in the field, then the public outreach team will continue to communicate with the complainant about the timeline, expectations of the disruptive activity, and a satisfactory resolution for all parties.

Restoration and Property Damage

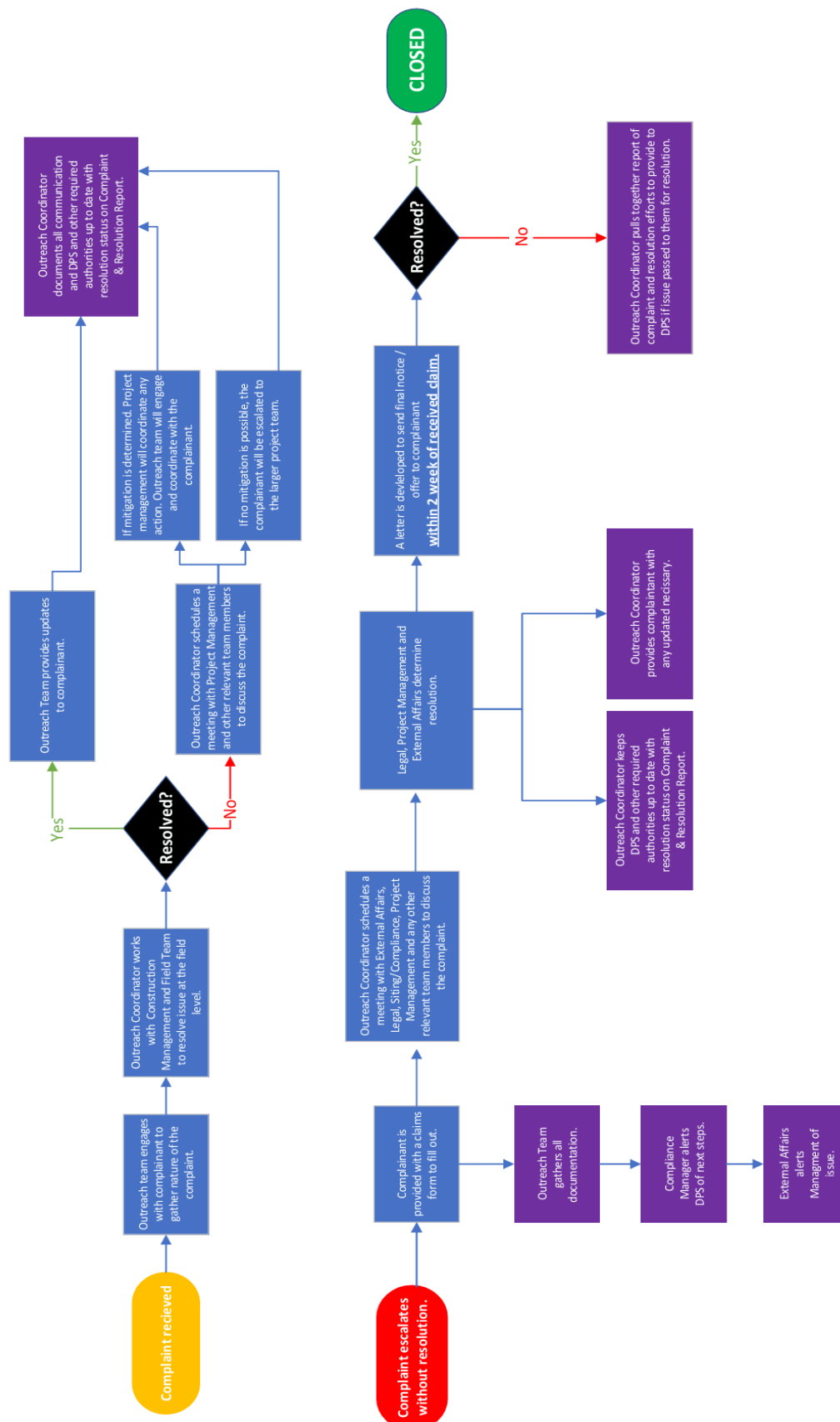
- The Project will restore to equal or better condition all work areas disturbed by construction and is dedicated to limiting any possible property damage. If any damage is proven to be caused by construction, the Project will repair or restore the damaged property. Complaints received regarding restoration and/or property damage will be documented by the field team on site where possible. Once the initial complaint is received, the Project's public outreach team will speak with the complainant to fully understand the nature of the complaint. All claims of damage will require photo evidence, a description of events, and cost estimates for repair. Claims will be submitted to the project team for review. The Project team will determine the acceptance or rejection of the claim and the complainant will be informed of the determination, including any necessary remedial actions if restoration was deemed unsuccessful.

Other

- All other complaints will be received by the project outreach team and first addressed at the field level. If it is determined the issue cannot be resolved in a timely manner in the field, the complaint will be brought to the larger project team to review. Potential mitigation or compensation measures will be discussed and implemented as necessary. Throughout the process the complainant will be updated on the review and determination. All complaints will be reported as required.

The complaint management and resolution process flow chart is provided as Appendix T-3.1.

### Appendix T-3.1 Complaint Management and Resolution Process Flow Chart



## Appendix T-4

### PSEG Long Island SHDF Interested Parties List

<b>State</b>		
NYSPSC (assigned Staff)	Rory M. Christian, Commissioner	3 Empire State Plaza, Albany, NY 12223
NYSPSC Long Island Branch	Nick Forst, Acting Director	125 E. Bethpage Road Plainview, NY
NYSDOT	Richard B. Causin, P.E, Regional Director	NYSDOT, 6th Floor, Traffic and Safety, 250 Veterans Memorial Highway, Hauppauge, NY 11788
NYSDEC	Cathy Haas, Region 1 Director	50 Circle Road, Stony Brook, NY 11790
NY Dept. of Ag and Markets	Richard Ball, Commissioner	10B Airline Drive, Albany, NY 12235
NYSOPRHP	Erik Kulleseid, Commissioner	One Empire State Plaza, Albany NY 12238
<b>State Political (District 1)</b>		
NY Sen. Anthony Palumbo		400 W. Main St. Suite 201 Riverhead, NY 11901
NY Assemblyman Tommy John Schiavoni		3350 Noyac Rd. Building B Suite 1 Sag Harbor, NY 11963
<b>Regional</b>		
Suffolk County Water Authority	Jeff Szabo, CEO	4060 Sunrise Highway, Oakdale NY 11769
LIRR	Rob Free, President LIRR	Jamaica Station, Jamaica, NY 11435
<b>Municipal</b>		
Suffolk County	Ed Romaine, Executive	100 Veterans Memorial Highway, Hauppauge, NY 11788
Suffolk County Department of Public Works	Charles Bartha, Commissioner	335 Yaphank Ave, Yaphank NY 11980
Soil and Water Conservation District	Corey Humphrey, District Manager	423 Griffing Ave. Suite 110, Riverhead, NY 11901
Town of Southampton	Supervisor Maria Moore	116 Hampton Road, Southampton, NY 11968
Town of Southampton	Charles McArdle, Superintendent of Highways	20 Jackson Ave, Hampton Bays, NY 11946
Village of Southampton	William Manger, Mayor	23 Main Street, Southampton NY 11968
Village of Southampton	Corey Swezey, Highway Supervisor	23 Main Street, Southampton NY 11968
<b>Community Organizations</b>		
Sustainable Southampton Green Advisory Committee	Dieter von Lehsten, Co-Chair	
North Sea CAC	Stephanie McNamara	

Water Mill CAC	Rachel Verno, Chair	
Southampton African American Museum	Brenda Simmons	245 N Sea Rd, Southampton, NY 11968
<b>Emergency Services</b>		
Southampton Town Police Department	Chief James Kiernan	110 Old Riverhead Road, Hampton Bays, NY 11946
Southampton Village Police Department	Chief Suzanne Hurteau	151 Windmill Lane Southampton, NY 11968
Southampton Fire Department	Chief Emmanuel Escobar	470 Hampton Rd. Southampton, NY 11968
Southampton Town Fire Marshal	John Rankin, Chief	27 Ponquogue Ave, Hampton Bays, NY 11946
Southampton Town Volunteer Ambulance	Ian King, EMS Supervisor	1232 North Sea Road, Southampton NY 11968
Southampton Village Volunteer Ambulance	Chief Kyle McGuinness	165 Windmill Ln, Southampton, New York 11968
Southampton Village Fire Marshal	Chief Dean McNamara	23 Main Street, Southampton NY 11968
<b>Schools</b>		
Our Lady of Hamptons RC School	CSJ, Sister Kathryn Schlueter	160 N Main St, Southampton, NY 11968
Southampton Union Free School District	Dr. Farima Morrell, Superintendent	Southampton UFSD, 70 Leland Lane, Southampton NY 11968

## Appendix T-5

### PSEG Long Island SHDF Letter to Municipalities Announcing SHDF Project

15 Park Drive  
Melville, NY 11747



August 23, 2023

Senator Anthony Palumbo  
400 West Main Street  
Suite 201  
Riverhead, NY 11901

Re: Introduction to the proposed "Southampton to Deerfield Transmission Project"

Dear Senator Palumbo:

PSEG Long Island LLC ("PSEG Long Island"), on behalf of and as agent for the Long Island Lighting Company d/b/a LIPA, has identified a need in your area, which will be addressed through the Southampton to Deerfield Transmission Project, or SHDF Project.

The capacity and reliability upgrades PSEG Long Island is planning to construct are necessary to keep pace with the growing demand for electricity and will improve resiliency while minimizing disruptions to the community. PSEG Long Island has proposed a new, 138 kilovolt underground transmission line (SHDF Project) between two existing substations in the Village of Southampton (intersection of North Sea Road and West Prospect Street) and the Hamlet of Watermill (on Watermill Town Road).

The new line will enhance the resiliency of the electric system, while also improving redundancy – a crucial factor for ensuring the long-term reliability of the energy grid. The line must be installed to meet the capacity needs on the South Fork and for PSEG Long Island to continue to maintain a safe, robust, and reliable system, and remain in compliance with federal regulations.

We have determined that the most suitable construction method will be underground, utilizing public streets and rights of ways to the maximum extent possible due to unique engineering considerations and environmental constraints.

In addition to consulting with the various municipalities along the chosen route(s) for the SHDF Project, PSEG Long Island must receive: Federal approval from or consultation with the U.S. Army Corps of Engineers; State approval in the form of a Public Service Law Article VII "Certificate of Environmental Compatibility and Public Need" from the New York State Public Service Commission; New York State approval from or consultation with the New York Department of Environmental Conservation, New York State Office of Parks, Recreation & Historic Preservation and the New York State Department of Transportation; and consultation with Suffolk County, the Town of Southampton, and the Village of Southampton.

Enclosed with this letter you will find a fact sheet that offers an overview of the SHDF Project. I will be in touch to coordinate meeting times to provide a comprehensive presentation of the project's siting, permitting, and construction processes. If your constituents have any questions or concerns, please direct them to contact the project team via email at [info@southampton2deerfield.com](mailto:info@southampton2deerfield.com) or via telephone at 631-237-7196.

Thank you again for your time, and we appreciate your consideration of this important project.

Sincerely,

A handwritten signature in cursive script that reads "Bill Faulk".

Bill Faulk  
Regional External Affairs Manager  
PSEG Long Island



## Appendix T-6

## PSEG Long Island SHDF Fact Sheet (English and Spanish)

**PSEG LONG ISLAND**

**Southampton to Deerfield Transmission Project**

PSEG Long Island is committed to delivering best-in-class system reliability by expanding electrical capacity to meet the energy needs of the communities it serves, today and in the future. This is especially true on the East End of Long Island, where demand continues to grow, and additional transmission infrastructure is needed.

**Project Overview & Benefits**

PSEG Long Island, as the agent of LIPA, is proposing a new underground electric transmission project to increase the load capacity and reliability of the electric transmission system on Long Island's South Fork. Called the Southampton to Deerfield Transmission Project ("SHDF Project" or "Project"), its principal component is the installation of a new underground 138 kilovolt (kV) transmission line between the existing Southampton Substation (located in the Hamlet of Watermill, on Water Mill Towd Road) primarily along roadways on existing municipal rights-of-way. The SHDF Project is the most cost-effective solution to meet the South Fork's increasing electrical demand and need for reliable electrical service while minimizing disruptions to the community. The Project also is consistent with and furthers the goals of New York's Climate Leadership and Community Protection Act by supporting the transmission of wind energy on Long Island.

**Benefits include:**

- The new 138kV electric transmission cable will help ensure the continued reliable service to the East End of Long Island. With the South Fork load continually growing, the proposed 138kV supply circuit from the Southampton Substation to the Deerfield Substation will enhance reliability and add redundancy to the existing transmission system.
- The new 138kV cable will be located entirely underground except for certain above-ground electrical equipment within the existing substations.
- The Project will be located primarily under roads and other public rights-of-way.
- Construction of the project will occur with the least amount of impact to residents and travelers in the area. Throughout construction, access to businesses and residences along the project route will be maintained.

For questions about the SHDF Project, call or text 631-237-7196  
Visit [www.SH2DF.com](http://www.SH2DF.com)  
Email: [info@southampton2deerfield.com](mailto:info@southampton2deerfield.com)

**PSEG LONG ISLAND**

**Southampton to Deerfield Transmission Project**

**Underground Transmission Construction Process Overview**

The proposed route will occur primarily along North Sea Road, Willow Street, North Main Street, North Sea Mecox Road, David Whites Lane, Edge of Woods Road, and Water Mill Towd Road in the Town of Southampton, thus minimizing impacts to residents and travelers to the area.

**Underground Construction Involves Five Key Phases**

- Splice Vaults Installation:** Underground vaults will be installed at intervals along the route to splice together underground cable.
- Conduit Installation:** During the installation process, crews will route the new conduits to the new splice vaults.
- Restoration:** After completing the installation of the vaults, any excavated and disturbed areas will be restored.
- Cable Installation:** Underground cable arrives on trucks specifically designed for their installation. Crews will pull cable from one vault to another along the project route.
- Cable Splicing:** Crews will set up a climate-controlled environment at each vault location to splice the underground cables together. This activity is continuous for approximately one week for each vault.

**Permitting & Consultation Process**

To construct the Project, PSEG Long Island will need, in addition to other necessary permits:

- The New York State Public Service Commission's issuance of an Article VII Certificate of Environmental Compatibility and Public Need and approval of an Environmental Management & Construction Plan (EM&CP).
- Approval from or consultation with the New York Department of Environmental Conservation, New York State DOT, and New York State Office of Parks, Recreation & Historic Preservation.
- Consultation with Suffolk County, Town of Southampton, and Village of Southampton.

For questions about the SHDF Project, call or text 631-237-7196  
Visit [www.SH2DF.com](http://www.SH2DF.com)  
Email: [info@southampton2deerfield.com](mailto:info@southampton2deerfield.com)

**PSEG LONG ISLAND**

**Proyecto de transmisión de Southampton a Deerfield**

PSEG Long Island se compromete a ofrecer la mejor confiabilidad del sistema en su clase mediante la expansión de la capacidad eléctrica para satisfacer las necesidades energéticas de las comunidades a las que presta servicios, hoy y en el futuro. Esto es especialmente cierto en el East End de Long Island, donde la demanda continúa creciendo y se necesita infraestructura de transmisión adicional.

**Descripción general y beneficios del proyecto**

PSEG Long Island, como agente de LIPA, propone un nuevo proyecto de transmisión eléctrica subterránea para aumentar la capacidad de carga y la confiabilidad del sistema de transmisión eléctrica en South Fork de Long Island. Llamado Proyecto de Transmisión de Southampton a Deerfield ("Proyecto SHDF" o "Proyecto"), su componente principal es la instalación de una nueva línea de transmisión subterránea de 138 kilovoltios (kV) entre la subestación de Southampton existente (ubicada en el pueblo de Southampton en la intersección de North Sea Road y West Prospect Street) y la subestación Deerfield existente (ubicada en Hamlet of Watermill, en Water Mill Towd Road) principalmente a lo largo de carreteras en derechos de paso municipales existentes. El Proyecto SHDF es la solución más rentable para satisfacer la creciente demanda eléctrica de South Fork y la necesidad de un servicio eléctrico confiable y al mismo tiempo minimizar las interrupciones en la comunidad. El Proyecto también es consistente y promueve los objetivos de la Ley de Protección Comunitaria y Liderazgo Climático de Nueva York al apoyar la transmisión de energía eléctrica en Long Island.

**Beneficios incluidos:**

- El nuevo cable de transmisión eléctrica de 138 kV ayudará a garantizar un servicio confiable y continuo al East End de Long Island. Con la carga de South Fork en continuo crecimiento, el circuito de suministro propuesto de 138 kV desde la subestación de Southampton hasta la subestación de Deerfield mejorará la confiabilidad y agregará redundancia al sistema de transmisión existente.
- El nuevo cable de 138 kV estará ubicado completamente bajo tierra, excepto ciertos equipos eléctricos aéreos dentro de las subestaciones existentes.
- El Proyecto estará ubicado principalmente debajo de caminos y otros derechos de vía públicos.
- La construcción del proyecto se realizará con el menor impacto para los residentes y viajeros en el área. Durante toda la construcción, se mantendrá el acceso a empresas y residencias a lo largo de la ruta del proyecto.

Si tiene preguntas sobre el proyecto SHDF, llame o envíe un mensaje de texto al: 631-237-7196  
Visite [www.SH2DF.com](http://www.SH2DF.com)  
Correo electrónico: [info@southampton2deerfield.com](mailto:info@southampton2deerfield.com)

**PSEG LONG ISLAND**

**Proyecto de transmisión de Southampton a Deerfield**

**Descripción general del proceso de construcción de transmisión subterránea**

La ruta propuesta se realizará principalmente a lo largo de North Sea Road, Willow Street, North Main Street, North Sea Mecox Road, David Whites Lane, Edge of Woods Road y Water Mill Towd Road en la ciudad de Southampton, minimizando así los impactos a los residentes y viajeros a la zona.

**La construcción subterránea implica cinco fases clave:**

- Instalación de Bóvedas de Empalme:** Se instalarán bóvedas subterráneas a intervalos a lo largo de la ruta para unir el cable subterráneo.
- Instalación de conductos:** Durante el proceso de instalación, los equipos encaminarán los nuevos conductos hasta las nuevas bóvedas de empalme.
- Restauración:** Una vez finalizada la instalación de las bóvedas, se restaurarán las zonas excavadas y perturbadas.
- Instalación de cables:** El cable subterráneo llega en camiones diseñados específicamente para su instalación. Las cuadrillas tirarán el cable de una bóveda a otra a lo largo de la ruta del proyecto.
- Empalme de cables:** Las cuadrillas establecerán un ambiente con clima controlado en cada ubicación de la bóveda para unir los cables subterráneos. Esta actividad es continua durante aproximadamente una semana para cada bóveda.

**Proceso de permisos y consultas**


Para construir el Proyecto, PSEG Long Island necesitará, además de otros permisos necesarios:

- La emisión por parte de la Comisión de Servicios Públicos del Estado de Nueva York de un Certificado de Compatibilidad Ambiental y Necesidad Pública del Artículo VII y la aprobación de un Plan de Construcción y Gestión Ambiental (EM&CP).
- Aprobación o consulta con el Departamento de Conservación Ambiental de Nueva York, el DOT del Estado de Nueva York y la Oficina de Parques, Recreación y Preservación Histórica del Estado de Nueva York.
- Consulta con el condado de Suffolk, el pueblo de Southampton y la aldea de Southampton.

Si tiene preguntas sobre el proyecto SHDF, llame o envíe un mensaje de texto al: 631-237-7196  
Visite [www.SH2DF.com](http://www.SH2DF.com)  
Correo electrónico: [info@southampton2deerfield.com](mailto:info@southampton2deerfield.com)

## Appendix T-7

## PSEG Long Island SHDF Public Information Session Advertisement



## Southampton to Deerfield Transmission Project Public Information Session

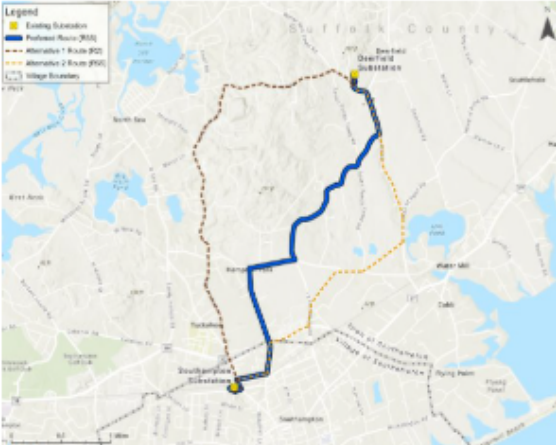
---

*PSEG Long Island is committed to delivering best-in-class system reliability by expanding electrical capacity to meet the energy needs of the communities it serves, today and in the future. This is especially true on the East End of Long Island, where demand continues to grow, and additional transmission infrastructure is needed.*

### Project Overview & Benefits

PSEG Long Island, as the agent of LIPA, is proposing a new underground electric transmission project to increase the load capacity and reliability of the electric transmission system on Long Island's South Fork. Called the Southampton to Deerfield Transmission Project ("SHDF Project" or "Project"), its principal component is the installation of a new underground 138 kilovolt (kV) transmission line between the existing Southampton Substation (located in the Village of Southampton at the intersection of North Sea Road and West Prospect Street) and the existing Deerfield Substation (located in the Hamlet of Watermill, on Water Mill Towd Road) primarily along roadways on existing municipal rights-of-way. The SHDF Project is the most cost-effective solution to meet the South Fork's increasing electrical demand and need for reliable electrical service while minimizing disruptions to the community. The Project also is consistent with and furthers the goals of New York's Climate Leadership and Community Protection Act by supporting the transmission of wind energy on Long Island.

### Project Area: Town of Southampton



For a turn by turn of the route please visit [www.SH2DF.com](http://www.SH2DF.com)

## Public Information Session

### Wednesday, December 6, 2023

### 1 - 3 PM & 5 - 7 PM

### Rogers Memorial Library, Morris Room

### 91 Coopers Farm Road, Southampton

For questions about the SHDF Project, call or text 631-237-7196

Visit [www.SH2DF.com](http://www.SH2DF.com)

Email: [info@southampton2deerfield.com](mailto:info@southampton2deerfield.com)



## Appendix T-8

### PSEG Long Island SHDF Letter to Abutting Landowners and Alternative Routes Abutting Landowners - Public Information Session

**Bill Faulk**  
Regional External Affairs Manager  
PSEG Long Island  
631-237-7196  
[info@southampton2deerfield.com](mailto:info@southampton2deerfield.com)  
[www.SH2DF.com](http://www.SH2DF.com)



November 13, 2023

**Re: Introduction to the Proposed "Southampton to Deerfield Transmission Project"**

Dear Neighbor:

PSEG Long Island LLC ("PSEG Long Island"), on behalf of and as the agent for the Long Island Lighting Company d/b/a LIPA, has identified a need in your area, which will be addressed through the Southampton to Deerfield Transmission Project, or SHDF Project.

The capacity and reliability upgrades PSEG Long Island is planning to construct are necessary to keep pace with the growing demand for electricity and will improve resiliency while minimizing disruptions to the community. Electric transmission lines carry high-voltage power from generation sources to the substations that serve our communities with lower-voltage electricity. They are essential to our power grid, and in order to continue meeting mandatory federal regulations for reliability, we need to construct a new, 138 kilovolt underground transmission line (the SHDF Project) between the existing Southampton Substation (located in the Village of Southampton at the intersection of North Sea Road and West Prospect Street) and the existing Deerfield Substation (located in Watermill, on Water Mill Towd Road).

The new line will enhance the resiliency of the electric system, while improving redundancy – a crucial factor for ensuring the long-term reliability of the energy grid. The line must be installed to meet the capacity needs on the South Fork and for PSEG Long Island to continue to maintain a safe, robust, and reliable system, and remain in compliance with federal regulations.

Transmission lines can be installed on overhead towers or under the ground. After studying the area, we have determined that underground lines are most appropriate for this upgrade. This is partly due to engineering design limitations present in the area, and partly due to our goals of minimizing both the impact to the environment and the need to create new rights-of-way for power infrastructure. To the maximum extent possible, the SHDF Project will be constructed within public streets and along existing rights-of-way.

As part of the permitting process for the SHDF Project, PSEG Long Island is consulting with Suffolk County, the Town of Southampton, and the Village of Southampton, and pursue: Federal approval or consultation from the U.S. Army Corps of Engineers; regulatory approval in the form of a "Certificate of Environmental Compatibility and Public Need" from the New York State Public Service Commission; approval from or consultation with the New York Department of Environmental Conservation, New York State Office of Parks, Recreation & Historic Preservation, and the New York State Department of Transportation.

Along with this letter, we have included a fact sheet that provides details on the project so that you may better familiarize yourself with it and the importance of this project to the community. Additionally we will be hosting a public information session on Wednesday, December 6, 2023 from 1 p.m. to 3 p.m. and 5 p.m. to 7 p.m. at the Rogers Memorial Library. We have also created a SHDF Project website ([www.SH2DF.com](http://www.SH2DF.com)), email address ([info@southampton2deerfield.com](mailto:info@southampton2deerfield.com)), or if you prefer you can reach us by phone or text through our project hotline (631-237-7196).

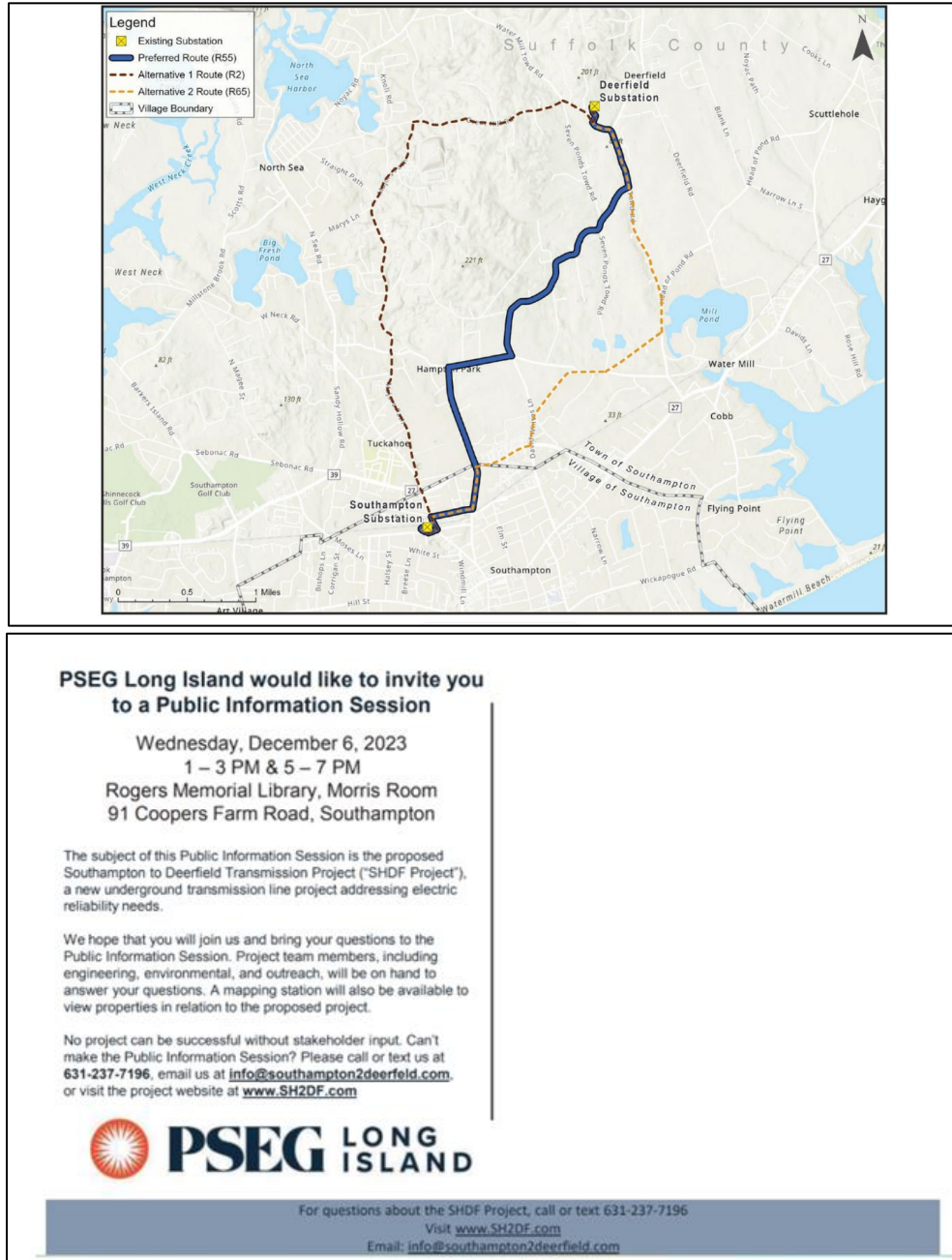
Thank you for your time.

Sincerely,

**Bill Faulk**  
Regional External Affairs Manager  
PSEG Long Island

## Appendix T-9

### PSEG Long Island SHDF Postcard to abutting landowners and Alternative Routes Abutting Landowners – Public Information Session



Appendix T-10  
PSEG Long Island SHDF Public Information Session Comment Card

Thank you for your interest in the Public Information Session for the Southampton to Deerfield Transmission Project (SHDF).

Please share with us your questions and comments.

☐

I would like to receive SHDF Project email updates

☐

I would like to speak with a SHDF Project representative

Name: \_\_\_\_\_  
Address: \_\_\_\_\_  
Phone: \_\_\_\_\_  
Email: \_\_\_\_\_



**PSEG** LONG  
ISLAND

For questions about the SHDF Project, call or text 631-237-7196

Visit [www.SH2DF.com](http://www.SH2DF.com)

Email: [info@southampton2deerfield.com](mailto:info@southampton2deerfield.com)

## Appendix T-11

### PSEG Long Island SHDF Letter pre-filing Article VII Application Abutting Landowners and Alternative Routes Abutting Landowners



January 29, 2024

**Re: Introduction to the Proposed "Southampton to Deerfield Transmission Project"**

Dear Neighbor:

PSEG Long Island LLC (or PSEG Long Island), on behalf of and as agent for the Long Island Lighting Company d/b/a LIPA, has identified an important electrical need in your area. We propose to address that need through the Southampton to Deerfield Transmission Project, or SHDF Transmission Project, to increase load capacity and reliability of the electric transmission system in eastern Long Island.

Electric transmission lines play a crucial role in our power grid by carrying high-voltage power from generation sources to the substations that serve our communities with lower-voltage electricity. In order to reinforce LIPA's electric transmission system in the South Fork area, a new 138-kilovolt underground transmission line connecting the existing Southampton Substation (located in the Village of Southampton at the intersection of North Sea Road and West Prospect Street) and the existing Deerfield Substation (located in the Hamlet of Watermill on Water Mill Towd Road) is necessary.

The new transmission line will make the system more resilient and will improve redundancy, which is vital to the long-term reliability of the energy grid. The SHDF Transmission Project is required to be completed by 2028 for PSEG Long Island to continue to maintain a safe, robust, and reliable system, and meet present and future electrical needs.

Transmission lines can be installed on overhead towers or underground. After studying the area, we have determined that underground lines would be more appropriate for the SHDF Transmission Project. This is partly due to engineering design limitations present in the area, and partly due to our goals of minimizing impact to the environment and avoiding the creation of new rights-of-way for power infrastructure. To the maximum extent possible, the SHDF Transmission Project will be constructed within public streets and along existing municipal rights-of-way. Construction of the SHDF Transmission Project will be performed with the intent of minimizing impact to residents and travelers in the area to the extent practicable. Throughout construction, access to businesses and residences along the Project route will be maintained.

As part of the permitting process for the SHDF Transmission Project, PSEG Long Island is consulting with Suffolk County, the Town of Southampton, and the Village of Southampton, and pursuing State approval in the form of a "Certificate of Environmental Compatibility and Public Need" from the New York State Public Service Commission. PSEG Long Island is also consulting with the New York Department of Environmental Conservation, New York State Office of Parks, Recreation & Historic Preservation and the New York State Department of Transportation.

We want you to understand the nature of this project and its importance to your community. Along with this letter, we have included a fact sheet that gives details about the SHDF Transmission Project and provides ways to communicate with us directly if you have further questions. We have also created a SHDF Transmission Project website [www.southampton2deerfield.com](http://www.southampton2deerfield.com) and email address [info@southampton2deerfield.com](mailto:info@southampton2deerfield.com) if you prefer to learn more via your computer or smart phone. We can also be reached by voice or text through our project hotline 631-237-7196.

Thank you for your time.

Sincerely,

*Anthony Carullo*  
Anthony Carullo  
Project Manager  
Southampton to Deerfield Transmission Project  
PSEG Long Island

## Appendix T-12

### Statutory Service List

First Name	Last Name	Title	Organization	Org Cont	Address	Address Cont	City	State	Zip
Edward	Romaine	County Executive	Suffolk County		100 Veterans Memorial Highway		Hauppauge	New York	11788
Maria	Moore	Supervisor	Town of Southampton		Town Hall (Second Floor)	116 Hampton Road	Southampton	New York	11968
William	Manger	Mayor	Village of Southampton		23 Main Street		Southampton	New York	11968
Hope	Knight	Commissioner , President and CEO	NYS Dept. of Economic Development		655 Third Avenue	4th Floor	New York	New York	10017
Richard	Ball	Commissioner	NYS Dept. of Agriculture and Markets		10B Airline Drive		Albany	New York	12235
Marie Therese	Dominguez	Commissioner	NYS Dept. of Transportation		50 Wolf Road	POD 53	Albany	New York	12232
Amanda	Lefton	Commissioner	NYS Dept. of Environmental Conservation		625 Broadway		Albany	New York	12233
Richard B.	Causin, P.E	Regional Director	NYS Dept. of Transportation - Region 10		250 Veterans Memorial Highway		Hauppauge	New York	11788
Cathy	Haas	Regional Director	NYS Dept. of Environmental Conservation	Conservation - Region 1	SUNY @ Stony Brook	50 Circle Road	Stony Brook	New York	11790
Walter	Mosley	Secretary of State	NYS Department of State		One Commerce Plaza	99 Washington Avenue	Albany	New York	12231
Randy	Simons	Commissioner	NYS Office of Parks, Recreation & Historic Preservation		625 Broadway		Albany	New York	12207
Hon. Tommy John	Schiavoni	Assemblyman	New York Assembly District 1	LOB	432		Albany	New York	12248
Hon. Anthony H.	Palumbo	Senator	New York State Senate District 1		188 State Street	Legislative Building, Room 604	Albany	New York	12247
Rob	Free	President	Long Island Rail Road		Jamaica Station		Jamaica	New York	11435

## Appendix T-13

### Statutory Landowner List

First Name	Last Name	Title	Organization		Address	Address (Cont)	City	State	Zip
John	Milazzo	General Counsel	Suffolk County Water Authority		4060 Sunrise Highway		Oakdale	New York	11769
Haley	Stein	General Counsel	Long Island Railroad	c/o Metropolitan Transportation Authority	2 Broadway, 4th Floor		New York	New York	10004
Christopher	Clayton	County Attorney			H Lee Dennison Building	100 Veterans Memorial Highway	Hauppauge	New York	11788
James	Burke	Town Attorney	Southampton Town		Town Hall	116 Hampton Road	Southampton	New York	11968
Eileen	Powers	Village Attorney	Southampton Village		Southampton Village Hall	23 Main Street	Southampton	New York	11968
Lisa	Zafonte	Assistant General Counsel	Long Island Power Authority		333 Earle Ovington Blvd	Suite 403	Uniondale	New York	11553
Attn: John B. King, Jr.,		Chancellor	SUNY System Administration	H. Carl McCall SUNY Building	353 Broadway		Albany	New York	12246



# Appendix T-14

## PSEG Long Island SHDF Article VII Application Filing Letter to Statutory Landowner List



### **NOTICE PURSUANT TO PSL §122(2)(c)**

*February 16, 2024*

#### **BY FIRST CLASS MAIL**

#### **TO ALL LANDOWNERS OF LAND ON WHICH ANY PORTION OF THE FACILITY DESCRIBED BELOW IS TO BE LOCATED:**

PSEG Long Island LLC on behalf of and as agent for the Long Island Lighting Company d/b/a LIPA, a wholly-owned subsidiary of the Long Island Power Authority (the “Applicant”) intends to file an application on or about February 16, 2024 with the New York State Public Service Commission (“Commission”) for a Certificate of Environmental Compatibility and Public Need under Public Service Law (“PSL”) Article VII for the construction, operation and maintenance of the “Southampton to Deerfield” or “SHDF” Transmission Project (the “Project”) in Suffolk County, New York. The Project is the construction of a new 138 kilovolt (“kV”) underground transmission line of approximately 4.5 miles (the “Facility”), to be operated initially at 69 kV, primarily within municipal public roadway rights-of-way between the Southampton Substation and the Deerfield Substation, in the Town of Southampton, Suffolk County. The Facility will be located wholly within the Town of Southampton and will traverse the Village of Southampton. The Applicant currently has franchise rights which allow it to install permanent electric facilities in roadways along the general alignment of the proposed route of the Facility, and, to the extent practical, efforts will be made to construct it within those roadway limits. Additional information about the Project is available from the Applicant by telephone (631-237-7196), email ([info@southampton2deerfield.com](mailto:info@southampton2deerfield.com)), and at the Project’s website ([www.SH2DF.com](http://www.SH2DF.com)). Your property may be impacted by the Project.

After the Application has been filed and the PSC has assigned it a case number, interested persons who wish to participate as parties in this case may file a notice of intent to be a party in the case. This may be done through the PSC’s web site. Enter “Southampton to Deerfield” in the box labeled “Search:” on the right side of the PSC’s listing of “Latest Cases/Matters started” (which is located at <https://documents.dps.ny.gov/public/Common/SearchResults.aspx?MC=1&CalDate=30>). Then, in the “Search Result,” click on the Case/Matter number on the left side. This will bring the user to the main Document and Matter Management (DMM) page for this case. On that page, the prospective party should click the button at the upper right labeled “Request for Party Status” to see a web page with instructions for the procedures to follow to request party status.

#### **Ways to Comment to the Commission:**

Via the Internet or Mail: The public may submit comments by email to the Hon. Michelle L. Phillips, Secretary, at [secretary@dps.ny.gov](mailto:secretary@dps.ny.gov) or by mail to Secretary Phillips at the New York State Public Service Commission, Three Empire State Plaza, Albany, New York 12223-1350. Comments may also

be entered directly into the case file for this matter by clicking on the button labeled “Post Comments” at the upper right on the main DMM page for this case (see above).

Via the Commission’s Toll-Free Opinion Line: Individuals may choose to submit comments by calling the Commission’s Opinion Line at 1-800-335-2120. This line is set up to receive in-state calls 24 hours a day. These calls are not transcribed but a summary is provided to the Administrative Law Judge who will report to the Commission.

All comments should refer to the case number. All comments will become part of the record considered by the Commission. Comments will be accepted throughout the pendency of this case. Also on the main DMM page for this case (see above), one can click on the “Public Comments” tab to read written comments, and on the “Filed Documents” tab to see other documents such as the application and transcripts of public statement hearings. A copy of the Application will be available for public inspection in each of the following local public libraries on or shortly after the date the Application is filed with the Commission: Rogers Memorial Public Library, 91 Coopers Farm Road, Southampton, NY 11968; Southampton Town Hall, 116 Hampton Road, Southampton, NY 11968; and Southampton Village Hall, 23 Main Street, Southampton, NY 11968. In addition, copies of the Application will be available for public inspection at the Department of Public Service Offices in Albany (Office of Central Files, 14th Floor, Three Empire State Plaza, Albany, NY 12223). Many libraries offer free internet service, which can be used to obtain access to the Commission’s website, including the DMM.

## Appendix T-15

## PSEG Long Island SHDF Public Notice of Article VII Application Filing

**PUBLIC NOTICE**

**APPLICATION OF PSEG LONG ISLAND LLC ON BEHALF OF AND AS AGENT FOR  
THE LONG ISLAND LIGHTING COMPANY D/B/A LIPA FOR A CERTIFICATE OF  
ENVIRONMENTAL COMPATIBILITY AND PUBLIC NEED PURSUANT TO  
ARTICLE VII OF THE PUBLIC SERVICE LAW FOR THE SOUTHAMPTON TO  
DEERFIELD TRANSMISSION PROJECT**

Pursuant to Article VII of the Public Service Law ("PSL") of the State of New York, PSEG Long Island LLC on behalf of and as agent for the Long Island Lighting Company d/b/a LIPA, a wholly-owned subsidiary of the Long Island Power Authority (the "Applicant") is providing public notice of its intent to file an application with the New York State Public Service Commission ("Commission") for a Certificate of Environmental Compatibility and Public Need ("Certificate") for the construction, operation and maintenance of the "Southampton to Deerfield" or "SHDF" Transmission Project (the "Project") in Suffolk County, New York.

**TO WHOM IT MAY CONCERN:**

PLEASE TAKE NOTICE that PSEG Long Island LLC on behalf of and as agent for the Long Island Lighting Company d/b/a LIPA, on or about February 16, 2024, will file an application (the "Application") with the Commission for a Certificate pursuant to Article VII of the PSL. The Applicant must receive a Certificate from the Commission before constructing the Project.

**DESCRIPTION OF THE PROJECT**

The Project is the construction of a new 138 (kilovolt ("kV")) underground transmission line of approximately 4.5 miles (the "Facility"), to be operated initially at 69 kV, primarily within municipal public roadway rights-of-way between the Southampton Substation and the Deerfield Substation, in the Town of Southampton, Suffolk County. The Applicant currently has statutory and municipal franchise rights which allow it to install permanent electric facilities in roadways along the general alignment of the proposed route of the Facility; and, to the extent practical, efforts will be made to construct the Facility within the roadway limits. The high voltage cable system components of the Facility include: (i) compacted, segmented copper conductor with water blocking compounds; (ii) super smooth semi-conductive conductor shield; (iii) super clean cross-linked polyethylene ("XLPE") insulation; (iv) super smooth semi-conductive insulation shield; (v) semi-conductive longitudinal water blocking tapes; (vi) corrugated seamless aluminum metallic sheath or equivalent; (vii) black high-density polyethylene ("HDPE") jacket; and (viii) semi-conductive polyethylene over jacket. Each cable will be installed in a 10-inch standard diameter ratio ("SDR") 11 HDPE conduit. In addition to these conduits, two 4-inch SDR11 HDPE conduits will be installed for fiber optic communication and ground continuity conductor. The three power conduits will be arranged in a trefoil (triangular) configuration.

A combination of different construction methods will be used to install the conduits. The Project will use open-cut trench excavation methods. While trenchless crossings are not anticipated, this method may ease construction spanning certain features or may minimize impacts should future conditions require it. Splice vaults, which serve to install (pull) and connect (splice) successive

lengths of cable, will be installed at approximate intervals of 2,000 to 2,500 feet along the underground route.

The Project requires alterations at the existing Southampton and Deerfield Substations to accommodate bus support structures, potential transformers, circuit breakers, switches, and cable termination structures.

Additional property rights may be required to site some components of the Project. Facility construction may necessitate a limited amount of trimming or clearing of shrubs and trees within the ROW to provide unimpeded and safe access to work sites.

## **PROPOSED ROUTE**

Exhibit 2 of the Application will describe the Project location in detail. The Facility will be located wholly within the Town of Southampton and will traverse the Village of Southampton. It will be constructed primarily within municipal public roadway rights-of-way. The Applicant currently has franchise rights which allow it to install permanent electric facilities in roadways along the general alignment of the proposed route of the Facility, and, to the extent practical, efforts will be made to construct the Facility within those roadway limits. Construction of the Project will involve one LIRR crossing: at a point in the Village of Southampton where the LIRR is elevated over North Sea Road, so conventional open trench installation techniques can be employed to cross. Detailed maps, drawings and explanations showing the proposed route for the Facility are set forth in various exhibits to this Application.

## **ALTERNATIVES**

Exhibit 3 of the Application will provide a description of the Applicant's evaluation of alternative routes and alternative methods to fulfill the need for which the Applicant proposes the Project. The evaluation includes a description of the comparative merits and detriments of each alternative as well as an explanation of why the Applicant believes the Project is superior to them. During the course of the proceeding, alternate locations not included in the Application or affected by the proposed route may be offered without further notice by publication. In addition, the Commission may, without further notice by publication, approve a location in municipalities not presently affected by the proposed route.

## **DATE OF FILING**

The Applicant expects to file the application for a Certificate with the Commission on or about February 16, 2024.

## **AVAILABILITY OF APPLICATION**

A copy of the application for the Certificate filed with the Commission will be served upon the chief executive officers of Suffolk County, the Town of Southampton, and the Village of Southampton, and a copy will be available for public inspection in each of the following locations: Rogers Memorial Public Library, 91 Coopers Farm Road, Southampton, NY 11968;

Southampton Town Hall, 116 Hampton Road, Southampton, NY 11968; and Southampton Village Hall, 23 Main Street, Southampton, NY 11968.

In addition, copies will be available for public inspection at the Department of Public Service Offices in Albany (Office of Central Files, 14<sup>th</sup> Floor, Three Empire State Plaza, Albany, NY 12223) and will be posted on the Commission's website ([www.dps.ny.gov](http://www.dps.ny.gov)).

#### **ADDITIONAL ASSISTANCE**

For information or assistance concerning the application, interested persons may contact the following:

<b>Hon. Michelle L. Phillips</b> Secretary State of New York Public Service Commission Empire State Plaza, Agency Building 3 Albany, NY 12223-1350 Phone: (518) 474-6350 Fax: (518) 486-6081 Email: <a href="mailto:secretary@dps.ny.gov">secretary@dps.ny.gov</a>	<b>Anthony Carullo</b> Project Manager PSEG Long Island 999 Stewart Ave, Suite 202 Bethpage, New York 11714 Phone: (631) 237-7196 Email: <a href="mailto:anthony.carullo@pseg.com">anthony.carullo@pseg.com</a>
--	---



Appendix T-16  
PSEG Long Island SHDF Public Statement Hearing Letter to Abutting  
Landowners and Alternative Routes Abutting Landowners



September 27, 2024

Re: "Southampton to Deerfield Transmission Project"

Dear Neighbor:

PSEG Long Island LLC ("PSEG Long Island"), on behalf of and as agent for the Long Island Lighting Company d/b/a LIPA, is proposing construction of a new underground electric transmission line to increase the reliability and load capacity of the electric transmission system on the South Fork. The project, called the Southampton to Deerfield Transmission Project or SHDF Project, consists of a new, 138 kilovolt underground transmission line between the Southampton Substation (intersection of North Sea Road and West Prospect Street) and the Deerfield Substation (on Watermill Towd Road).

PSEG Long Island is installing a new underground transmission circuit to meet the growing demand for electricity and provide greater system reliability. The line must be installed to meet current and future capacity needs on the South Fork, to continue the provision of safe, robust, and reliable service in the area, and remain in compliance with applicable regulations.

As part of the Article VII application process, the New York State Public Service Commission will hold virtual public information sessions and public statement hearings for the SHDF Project on **Wednesday, October 9, 2024**. For details on these events, please see the enclosed "*Notice of Public Information Forums and Public Statement Hearings, and Soliciting Public Comments.*" Enclosed with this letter you will also find a fact sheet that offers an overview of the SHDF Project and a notice about the settlement process.

Thank you again for your time, and we appreciate your consideration of this important project.

Sincerely,

*Anthony Carullo*

Project Manager, PSEG Long Island

Appendix T-17  
PSEG Long Island SHDF Project  
Outreach Completed

<b><u>External Affairs Activities</u></b>	<b><u>Date Completed</u></b>
Elected Official Letter announcing project: NYS Senate, NYS Assembly, Suffolk County, Town/Village of Southampton	8/23/23
Municipal Consultations:	
• Town of Southampton Supervisor's Office	8/29/23
• Village of Southampton	8/29/23
• Town of Southampton Historian	9/20/24
• Suffolk County Government	9/29/23
Email to North Sea CAC and Watermill CAC: Public Information Session	11/1/23
Community Kiosk- Snow White Laundry (50 County Road 39A, Southampton)	11/17/23
Community Kiosk- Southampton Village Hall	11/29/23
Newspaper Public Information Session Notice - Southampton Press	11/16/23, 11/23/23, 11/30/23
Newspaper Public Information Session Notice- Dan's Paper	11/17/23, 11/24/23, 12/1/23
Public Information Session Abutting and alternative routes abutting Landowner Letter	11/13/23
Public Information Session Abutting and alternative routes abutting Landowner Postcard	11/27/23
Public Information Session	12/6/23
Virtual Open House	12/9/23
North Sea Community Advisory Committee Presentation	12/12/23
Abutting Landowner Letter: Pre-Article VII Filing	1/29/24
Newspaper Notifications: Article VII Application Filing: Southampton Press	2/1/24 & 2/8/24
Newspaper Notifications: Article VII Application Filing: Dan's Paper	2/2/24 & 2/9/24
Statutory Service List: Article VII Application Filing Letter	2/16/24
Statutory Landowner Notification: Article VII Filing Letter	2/16/24
Presentation to Sustainable Southampton Green Advisory Committee	3/5/24
Deficiency Response Letter mailed to Service List	6/11/24

Notification Letter Public Information Forums, Public Statement Hearings, and Soliciting Public Comments : Abutting Landowner, Statutory Service, and Statutory Landowner	9/27/24
Virtual Public Statement Hearing	10/9/24
Virtual Public Information Session	10/9/24
Virtual Open House live on website	10/10/24
Long Island Railroad Correspondence	10/11/24
Business Surveying	11/7/24
Test Pitting Abutter Notification Letter	12/20/24
Municipal Consultations:	
• Town of Southampton Supervisor's Office	1/21/25
• Village of Southampton	1/21/25
• Meeting with Suffolk County Department of Public Works	1/27/25
• Town of Southampton Highway Department	8/6/25
Correspondance with Southampton UFSD	8/11/25
Consultation with Our Lady of the Hamptons School	9/16/25



## Appendix T-18

### Notice of Filing an Environmental Management and Construction Plan for the Southampton to Deerfield Transmission Project

#### PUBLIC NOTICE

##### NOTICE OF FILING OF AN ENVIRONMENTAL MANAGEMENT AND CONSTRUCTION PLAN – SOUTHAMPTON TO DEERFIELD TRANSMISSION PROJECT

Subject: Case 24-T-0113 - Application of PSEG Long Island LLC on Behalf of and as Agent for the Long Island Lighting Company d/b/a LIPA for a Certificate of Environmental Compatibility and Public Need Pursuant to Article VII of the Public Service Law for the Southampton to Deerfield Transmission Project

##### NOTICE OF FILING OF AN ENVIRONMENTAL MANAGEMENT AND CONSTRUCTION PLAN FOR THE SOUTHAMPTON TO DEERFIELD TRANSMISSION PROJECT

On or about October 3, 2025, PSEG Long Island LLC on behalf of and as agent for the Long Island Lighting Company d/b/a LIPA, a wholly-owned subsidiary of the Long Island Power Authority ("PSEG Long Island" or the "Company"), filed a proposed Environmental Management and Construction Plan ("EM&CP") with the New York Public Service Commission ("Commission"). The project proposed in the EM&CP (the "Project") consists of the design and construction of a new, 138 kV underground transmission line of approximately 4.5 miles, to be operated initially at 69 kV, between the Southampton Substation and the Deerfield Substation, in the Village and Town of Southampton, Suffolk County. The Project is driven by a requirement to address North American Electric Reliability Corporation ("NERC") transmission planning ("TPL") reliability standards. The Project is needed because the loss of either power generation or a transmission line serving Long Island's South Fork could lead to power outages. The addition of a second transmission line from Southampton Substation to Deerfield Substation would reinforce LIPA's electric transmission system on the South Fork and improve reliability of service to LIPA's customers.

#### EM&CP

The EM&CP describes the environmental protection measures to be implemented during construction of this Project. Included in the EM&CP is information relating to the specific location of the proposed construction procedures and environmental protection measures to be implemented for the Project. PSEG Long Island coordinated the EM&CP's protection measures related to right-of-way restoration, stream crossings, and water quality certification with the New York State Department of Environmental Conservation, the New York State Department of Agriculture and Markets, and the Department of Public Service Staff. PSEG Long Island also developed archaeological and historical protection measures in coordination with the New York State Office of Parks, Recreation and Historic Preservation. The EM&CP has been filed with the Commission consistent with the Joint Proposal filed by PSEG Long Island on July 10, 2025..

PSEG Long Island has established a website to provide additional information to the public about the Project: <https://www.southampton2deerfield.com>. An electronic version of the EM&CP will be available for public inspection on this website. The EM&CP may also be viewed online at the

website maintained by the New York State Department of Public Service at [www.dps.ny.gov](http://www.dps.ny.gov). From the homepage, click on "Commission File" then "File Search," and enter the case number, 24-T-0113, in the "Search by Case Number" field.

The EM&CP will be available for public inspection during normal business hours at the following locations:

Rogers Memorial Public Library  
91 Coopers Farm Road  
Southampton, NY 11968

Southampton Village Hall  
23 Main Street  
Southampton, NY 11968

Southampton Town Hall  
116 Hampton Road  
Southampton, NY 11968

#### COMMENTS, COMPLAINTS AND FURTHER INFORMATION

Any person may comment on the EM&CP by filing written comments with both the Commission Secretary and PSEG Long Island (at the addresses immediately below) within thirty (30) days of (a) the date the EM&CP was filed with the Commission, or (b) the date of newspaper publication of this notice, whichever is later. Please reference Case 24-T-0113 – Southampton to Deerfield Project when making any comments, complaints, or requesting further information regarding the project.

Hon. Michelle L. Phillips  
Secretary to the Commission  
New York State Public Service Commission  
Three Empire State Plaza  
Albany, NY 12223-1350  
Phone: (518) 474-4520  
Email: [secretary@dps.ny.gov](mailto:secretary@dps.ny.gov)

Stephen Woska  
Engineer, Projects and Construction  
PSEG Long Island  
999 Stewart Ave  
Bethpage, New York 11714  
Phone: (516) 238-9031  
Email: [Stephen.woska@psegliny.com](mailto:Stephen.woska@psegliny.com)

The PSEG Long Island agent or employee who will receive complaints, if any, during the construction of the Project is Stephen Woska, whose contact information is immediately above. Any

person desiring additional information about a specific geographical location or specific subject may request it from PSEG Long Island as indicated above. Any request for additional information should be specific as to the subject of the information desired.

## Appendix T-19

### Letter to Abutting Property Owners Included with the EM&CP Filing Notice



October 1, 2025

**Re: Filing of the Environmental Management and Construction Plan for the "Southampton to Deerfield Transmission Project"**

Dear Neighbor:

PSEG Long Island LLC (or PSEG Long Island), on behalf of and as agent for the Long Island Lighting Company d/b/a LIPA, has identified an important electrical need in your area.

As you have been previously notified, the Southampton to Deerfield Transmission Project, or SHDF Project, will address that need with the construction of a new, 138-kilovolt underground electric transmission line which will increase load capacity, and reinforce LIPA's electric transmission system in eastern Long Island.

The SHDF Project will be approximately 4.5 miles of underground electric transmission line between the existing Southampton Substation (at the intersection of North Sea Road and West Prospect Street) and the existing Deerfield Substation (on Water Mill ~~Town~~ Road). The new transmission line is needed to meet current and future capacity needs on the South Fork, and to continue the provision of safe, robust, and reliable service in the area, and remain in compliance with applicable regulations.

On or about October 3, 2025, PSEG Long Island will be filing a proposed Environmental Management and Construction Plan (EM&CP) for the Southampton to Deerfield Transmission Project with the New York State Public Service Commission. For details on the filing, please see the enclosed *Notice of Filing of an Environmental Management and Construction Plan – Southampton to Deerfield Transmission Project*. Enclosed with this letter you will also find a fact sheet that offers an overview of the SHDF Project.

You can find additional information on the Project website [www.southampton2deerfield.com](http://www.southampton2deerfield.com) or contact the Project via email [info@southampton2deerfield.com](mailto:info@southampton2deerfield.com) or by phone (631-237-7196).

Sincerely,

*Anthony Carullo*  
Anthony Carullo  
Project Manager  
Southampton to Deerfield  
Transmission Project  
PSEG Long Island

## Appendix T-20

### PSEG Long Island SHDF Door-to-door Business Survey



Southampton to Deerfield  
Transmission Project

November 12, 2024

Dear Business Owner,

We are reaching out to inform you of a proposed underground transmission project in your area, the Southampton to Deerfield Transmission Project. The proposed project route is primarily within municipal roadways and rights-of-way and construction is anticipated to begin in 2026.

As part of our community outreach, we would like to get a preferred contact method for your business so we can provide you with updates about the project and future construction activities. Additional information can be found on our project fact sheet or by visiting our project website [www.sh2df.com](http://www.sh2df.com). Please contact our project team using the information below and we would be happy to answer any questions.

For questions about the SHDF Project, call or text 631-237-7196  
Visit [www.SH2DF.com](http://www.SH2DF.com)  
Email: [info@southampton2deerfield.com](mailto:info@southampton2deerfield.com)

Appendix T-21  
Letter to Abutting Farm Operators Requesting Identification of Drainage Tiles

15 Park Drive  
Melville, NY 11747



August 27, 2025

«owner»  
«mailadd»  
«mail\_city», «mail\_state2» «mail\_zip»

**Re: Southampton to Deerfield Project – Farm Drainage Identification Request**

Dear Neighbor:

PSEG Long Island LLC (or PSEG Long Island), on behalf of and as agent for the Long Island Power Authority d/b/a LIPA, has identified an important electrical need in your area, which will be addressed through the Southampton to Deerfield Project (the "Project"). The Project includes the installation of a new underground 138 kilovolt (kV) transmission line between the existing Southampton Substation (located in the Village of Southampton at the intersection of North Sea Road and West Prospect Street) and the existing Deerfield Substation (located in the Hamlet of Watermill on Water Mill Towd Road) primarily along roadways and existing municipal rights-of-way.

As part of our Environmental Management and Construction Plan (EM&CP) and in accordance with New York State Public Service Commission permitting requirements PSEG Long Island is required to identify drainage tiles in proximity to the Project route prior to construction. The Project is planned for construction within municipal roadways near the property located at : «Property\_address». Please see the reverse side of this page for a full map of the Project route.

We would like to have an in-field consultation with you, if you are aware of any drainage tiles within 10 feet of the roadway on the property located at : «Property\_address». If you do not believe there are any drainage tiles within 10 feet of the roadway at the above-mentioned property, we are still interested in hearing from you.

Please respond to this letter no later than **September 12<sup>th</sup>** to arrange a site visit. You can contact the Project by phone (631-237-7196) or via email ([info@southampton2deerfield.com](mailto:info@southampton2deerfield.com)).

Thank you for your time.

Sincerely,

*Anthony Carullo*

Anthony Carullo, PMP  
Project Manager, Outside Plant  
PSEG Long Island

Appendix T-22  
List of Identified Farm, Agriculture District, or Purchased Development Rights  
Parcels

Address	City	State
340 Edge of Woods Rd	Water Mill	New York
210 Edge of Woods Rd	Southampton	New York
636 N Sea Mecox Rd	Southampton	New York
473 N Main St	Southampton	New York
357 Edge of Woods Rd	Southampton	New York
638 N Sea Mecox Rd	Southampton	New York
17 Clearview Farm Rd	Southampton	New York
16 Clearview Farm Rd	Southampton	New York
450 N Main St	Southampton	New York
416 N Main St	Southampton	New York
446 N Main St	Southampton	New York
846 Seven Ponds Towd Rd	Southampton	New York
338 Edge of Woods Rd	Water Mill	New York
830 Deerfield Rd	Southampton	New York
465 North Main St	Southampton	New York
365 Edge of Woods Rd	Southampton	New York
379 Edge of Woods Rd	Southampton	New York
356 Edge of Woods Rd	Southampton	New York
391 Edge of Woods Rd	Southampton	New York
397 Edge of Woods Rd	Southampton	New York
634 North Sea Mecox Rd	Southampton	New York
640 North Sea Mecox Rd	Southampton	New York
615 David Whites Ln	Southampton	New York
474 North Main St	Southampton	New York
530 North Sea Mecox Rd	Southampton	New York
70 Majors Path	Southampton	New York
141 County Rd 39A	Southampton	New York
460 Edge of Woods Rd	Southampton	New York

## Appendix T-23 PSEG Long Island SHDF Field Cards

### **Southampton to Deerfield Transmission Project**

PSEG Long Island is committed to delivering best-in-class electric reliability to you, our customers, by improving reliability and capacity of our electric transmission system.



**Call or Text: 631-237-7196**



PSEG Long Island is planning an upgrade to the existing transmission system of the East End through the installation of a 138kV underground electric transmission cable in the Town of Southampton. If you have questions about the project, contact us directly.

**Call or Text: 631-237-7196:**

**Email [info@southampton2deerfield.com](mailto:info@southampton2deerfield.com)**

**[www.SH2DF.com](http://www.SH2DF.com)**

## Appendix T-24

### PSEG Long Island SHDF Door-To-Door Notification of Soil Boring Activities



Southampton to Deerfield  
Transmission Project

April 26, 2024

Dear Neighbor,

We are writing to inform you of upcoming soil surveying activities that will be occurring in your area in connection with the Southampton to Deerfield Transmission Project. The work is anticipated to begin on or around April 29, 2024. Additional information regarding these activities can be found below.

#### What You Can Expect:

- Location of Work:
  - Soil borings will be performed within the Village, and Town rights-of-way along the following roads: North Main Street, David Whites Lane, and Edge of Woods Road.
- Work Hours:
  - This work is anticipated to begin on or around April 29, 2024 and is anticipated to be completed May 3, 2024, by crews working Monday through Friday 7 am- 5 pm.
- Environmental Investigation Activities:
  - To acquire samples, soil borings are planned to various depths along the proposed transmission route. Soil boring holes will be just large enough to collect all required information.
  - The work activities will comply with New York State standards and specifications for sediment control. Boring holes will be backfilled once completed and our contractor will responsibly dispose of any drill spoils generated from the activities.

For questions about the SHDF Project, call or text 631-237-7196  
Visit [www.SH2DF.com](http://www.SH2DF.com)  
Email: [info@southampton2deerfield.com](mailto:info@southampton2deerfield.com)



## Appendix T-25

### PSEG Long Island SHDF Letter to Abutting Landowners Notification of Test Pitting Activities



Southampton to Deerfield  
Transmission Project

December 20, 2024

Dear Resident,

We are writing to inform you of the upcoming survey fieldwork associated with the Southampton to Deerfield Project, an underground transmission project in your area. Beginning within the next few weeks a contractor for the project will be conducting test pit surveys to locate and confirm the depth of existing underground utilities within the road right of way.

#### What You Can Expect:

- Location of Work:
  - Test Pitting will be performed within Village, Town, and County rights-of-way along the following roads: North Sea Road, Willow Street, North Main Street, North Sea Mecox Road, David Whites Lane, Edge of Woods Road, and Water Mill ~~Towd~~ Road.
- Work Hours:
  - This work is anticipated to begin in January, pending permits from the Town and Village. This activity will take approximately 8 ~~weeks~~ for completion by crews working Monday through Friday 7am to 5pm.
  - Crews will be at one area for 1-2 days and then move to the next location.
- Activities:
  - Test pits will be performed using a combination of hand tools, including shovels, jackhammers, air knives and vacuum excavation equipment.
  - There will be no road closures required. Traffic controls and flaggers will be in place when necessary. Please be patient when driving through work area.
  - No driveways or access points will be blocked.
  - The work activities will comply with New York State standards and specifications for sediment control. Test pit holes will be backfilled once completed and our contractor will responsibly dispose of any spoils generated from the activities.
  - Roadways will be restored as required by local road opening permits.

For questions about the SHDF Project, call or text 631-237-7196  
Visit [www.SH2DF.com](http://www.SH2DF.com)  
Email: [info@southampton2deerfield.com](mailto:info@southampton2deerfield.com)

## Appendix T-26

### PSEG Long Island SHDF Project Hotline Script

During Pre-Application Filing and prior to receiving Notice to Proceed:

*“You have reached the PSEG Long Island Southampton to Deerfield Transmission Project hotline. If you have a question or concern, please leave your name, telephone number and a brief message, and we’ll call you back as soon as we can. Thank you.”*

After Notice to Proceed Received

*“You have reached the PSEG Long Island Southampton to Deerfield Transmission Project hotline. If you have a question or concern, please leave your name, telephone number and a brief message and we will return your call by the next business day. If this call is related to an emergency, please call 911. For additional general inquiries, you may contact the NYS Secretary to the Public Service Commission at*

*518-474-4520 or [secretary@dps.ny.gov](mailto:secretary@dps.ny.gov) or NYSDPS EC&C at 518-486-7874.”*